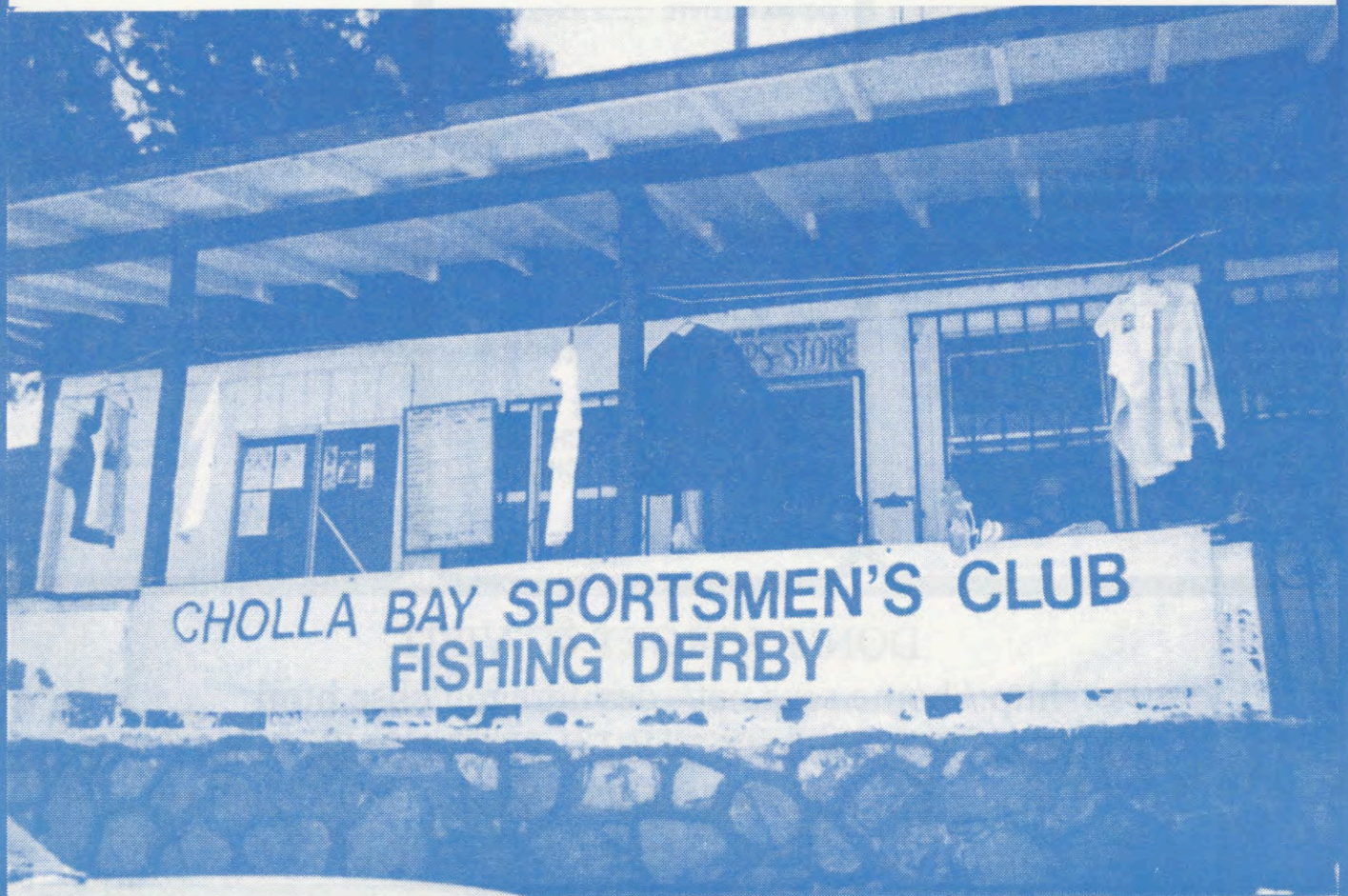




OFFICIAL PUBLICATION OF THE CHOLLA BAY SPORTSMEN'S CLUB

Volume 45, No. 5

June / July 2002



CHOLLA BAY SPORTSMEN'S CLUB
FISHING DERBY

STONE OF THIS JERUSALEM
CHOLLA BAY SPORTSMEN'S CLUB
STONE OF THIS JERUSALEM
CHOLLA BAY SPORTSMEN'S CLUB

HOLY MOUNTAIN ROTARY
CLUB
ROTARY
CLUB

YACHTING
CLUB
YACHTING
CLUB

2001 CHOLLA BAY SPORTSMEN'S CLUB • OFFICERS

COUNCIL OFFICERS:

CHAIRMAN: BOB BELK.....CHOLLA
 VICE CHAIR: ALAN PETERSON.....327-2570
 SECRETARY: PAT GOODIN.....CHOLLA
 TREASURER: ENEDINA OTAÑEZ...575-0044

OFFICIAL PUBLICATION: CHOLLA CHATTER

EDITORS: MARINA MONTAÑO.....294-3151
 chollachatter@hotmail.com

PRINTER: A-COMMERCIAL PRINTING

COUNCIL REPRESENTATIVES:

CHOLLA:

BOB BELK.....CHOLLA
 PAT GOODIN.....CHOLLA
 NANCY SCHMIDLI.....759-0181

TUCSON:

RICK SCHWARTZ.....745-0522
 SAL OTAÑEZ (ALTERNATE).....575-0044
 ALAN PETERSON.....327-2570
 MIKE CARNES.....299-8051

COMMITTEE CHAIRPERSONS:

FISHING DERBY:.....MIKE TRAVERSE
 CHATTER:.....MARINA MONTAÑO
 SHIP STORE:.....
 RADIO:.....ALAN PETERSON
 BUILDING:.....KEN GOODIN
 BIG TEN:.....BRAD MOEN
 X-MAS PARTY:.....NANCY SCHMIDLI
 & SANDY MOORE

OFF ROAD TRIPS.....
 AUDITORS.....

CHOLLA CHAPTER

PRESIDENT: PHIL GOBIN.....35099
 VICE PRES.: HAROLD RUNNER...25078
 SECRETARY: PAT GOODIN.....25056
 TREASURER: BOB ADAMS.....25034

MEMBERSHIP:

NANCY SCHMIDLI
 P.O. BOX 218
 LUKEVILLE, AZ 85719

BOARD OF DIRECTORS:

BOB BELK.....CHOLLA
 KEN GOODIN.....CHOLLA
 CLIVE JORDAN.....CHOLLA
 DON SCHMIDLI.....CHOLLA
 NANCY SCHMIDLI.....CHOLLA
 RICK SMITH.....CHOLLA
 DONNA WILLHITE.....CHOLLA

REPORTERS:

PAT GOODIN.....CHOLLA
 NANCY SCHMIDLI.....CHOLLA

SICK BAY:

CAROL SMITH.....CHOLLA

AUDITORS:

CAROL SMITH.....CHOLLA
 MICKY BABBITT.....CHOLLA

TUCSON CHAPTER

PRESIDENT: MIKE CARNES.....299-8051
 VICE PRES.: JOHN BARR.....745-5208
 SECRETARY: BILLIE JO CARNES...299-8051
 TREASURER: ENEDINA OTAÑEZ...575-0044

MEMBERSHIP:

SHIRLEY REID.....326-1090
 1440 E. HAMPTON
 TUCSON, AZ 85719

BOARD OF DIRECTORS:

MARION HOTCHKISS.....749-3460
 JERRY KITCHENS.....749-4242
 SYLVIA KITCHENS.....749-4242
 ALAN PETERSON.....327-2570
 SHIRLEY REID.....326-1090
 RICK SCHWARTZ.....745-0522
 SAL OTANEZ.....575-0044

REPORTER:

CARLA STEPHENS.....403-8737

SICK BAY: CARMEN SCHWARTZ.
 745-0522

AUDITORS:

MARION HOTCHKISS.....749-3460
 CARMEN SCHWARTZ.....

DON'T FORGET TO VISIT
<http://home.asus.net/~devildragon/cbsc.html>
 TO SEE EXSITING PICTURES FROM OUR PARTY
 ON JANUARY 19TH

CHOLLA BAY RADIO NETWORK

VHF

CHANNEL 16.....EMERGENCY
 CHANNEL 26.....MARINE

OPERATOR: AGUSTIN LEON

CB RADIO
 CHANNEL 3.....MONITOR
 CHANNEL 9.....EMERGENCY

AM MARINE, SHIP TO SHORE

2182 SAFETY & CALLING
 2555 BOAT TO SHORE
 1638 BOAT TO BOAT

PROMOTORA TURISTICA PLAYA ESCON-
DIDO
S.A. DE C.V. CHOLLA BAY HOMEOWNERS

We hope you got to spend some quality time in this area during April and May because the weather has been just beautiful. Probably a little too windy for successful fishing trips, but perfect for all other sports, outside cookouts and gatherings. If June follows through you better get to the bay and enjoy.

We wrote an article regarding the paving of the Cholla Road from the turn about to the entrance of Cholla hoping our explanation of reasons would reach you before the annual Vecinos meeting so you could read for yourselves the benefits due each lot owner. Unfortunately schedules were changed and we missed the opportunity to get the information to you at the approximated time. We are printing some of the highlights in this article and will have copies in the Cholla Bay Sales Office for you and we will be happy to discuss the issues with you...pro and con.

By now we have all experienced and enjoyed the benefits of a good solid road to travel to and from Penasco, now while the road is in such good shape we would like to go to the next level and pave it. We now have the government is willing to contribute to one third of the paving cost, the company for one third and we are now soliciting you, the homeowners to contribute the other one third. The paving of the road is a completely different project than the water and sewer some of you have mentioned you have contributed money towards that project and it has not been completed this is a completely different project and completion is our obligation and will be done at Company's expense. Your contributions toward the paving of the road will go into a separate account. Mr. Brown has suggested that dual signatures be signed on all check ..one a representative from the homeowners and one from the company .. and payments paid as the work is completed. If you have questions or comments please come to the Cholla Office and discuss them with us.

The Management.

News From Cholla Chapter - 1
by Pat Goodin

If you missed our luau, you missed out on a great time. We had somewhere around 60 people (mas o menos). Some of us started around 3:30 with some Bingo and just chatting. Others continued to come in at all times after that. Agapito played from 4:30 to 6:30, and he is really popular with all the Cholla people. He has been around Rocky Point off and on for a long time and everyone just seems to love listening and/or dancing to his music. We also had shuffle-board, but don't know if anyone played horse-shoes or not, but I did notice that everyone was having a good time.

Ken Goodin and Jerry Ketelhut worked in the kitchen most of the day cooking the chicken and pork ribs and the meat was wonderful, as were all the good side dishes everyone brought. We do have the best cooks in the world, right here in Cholla Bay. Our pot-lucks are hard to beat.

Memorial Day will be coming up real soon, and that's a derby week-end, so there should be a lot of people here that week-end. Come on down to ship's store and look around - be sure to get the new derby shirts there. Also, it's always fun to be there and watch the boats come in and watch them weigh in fish. There's always a good time in Cholla Bay!

Our May meeting will be at the Fiesta House Restaurant. That's at the Fiesta de Cortez Restaurant, and is a newly remodeled Restaurant. Try to join us there - May 14th - 5:00 Happy Hour, eat around 6:00. Board meeting is at 4:00. This is the regular 2nd Tuesday of May.

Also, tickets are now available for the annual steak dinner. It'll be Sunday, May 26th, starting at 6:00 p.m. We hope to have some of our derby sponsors with us at the dinner.

Our last meeting before the summer will be changed to the 1st Saturday of June. That will be SATURDAY, JUNE 1ST. So, mark your calendars now so you don't forget. Not sure yet, but it may be a pot-luck. It's really hard to know how many people will still be around.

So, for now, hasta luego and we'll see you "at the Bay"

News From Cholla Chapter - 2
 by Pat Goodin

So, here we are in June already and everyone is getting ready to leave Cholla for the summer. The weather here in Cholla has been great through, as of this writing. Still plenty cool at night, and getting fairly hot during the day. When you read this though, most of us who live here about 8 months of the year will be up in the cooler climates of Arizona, Colorado, or wherever people go when they leave here.

Cholla Chapter held their May meeting at the Desert Oasis in Rocky Point. We had a wonderful all-you-can-eat fish dinner. They weren't stingy with the fish, either, as they kept coming around with more before you could even finish what you had. It was a super-good dinner, and we had about 41 there at the meeting. If you couldn't make it, then you really missed another good dinner. The meeting had been scheduled to be at the Fiesta House, but they're doing extensive remodeling, and as far as I know they aren't open at this time. We thank the Oasis for helping us out on a short notice. The staff was "on the ball" and really friendly.

Our June meeting has been scheduled for Saturday, June 1st at the Fry Shack. Since most of us will be leaving in early June, we have moved it up as far as we could so that we could have as many people as possible at the meeting. This will be pot-luck since it's another one of those that we can not plan on how many might be there. This chatter will probably not even be out before that, so hope if you were in the "Bay" you found out about the meeting and could attend.

We are sorry to hear that Glen Davis passed away. Glen has been a big supporter of the Cholla Bay Sportsmen's Club for many years. Our sympathy goes out to his wife Doris. We'll all miss Glen driving around

(Continued on page 5)

*Mention your
 CBSC Membership
 for Special Pricing!*



**PHOENIX
 FISHING
 SUPPLY**

**Gift
 Certificates
 Available**

*Fishermen... Time to get geared up
 for this years Fishing Derby!*

**Heavy Duty 6\0
 Rod/Reel Combos**

**SCAMPI TAILS
 & JIG HEADS**

**Surf Casting
 Combos**

Heavy Monofilament & Spectra Line in stock!

4810 N. 16th Street • Phoenix, AZ 85016
(602) 266-2624

CAMELBACK	
PHOENIX FISHING SUPPLY	↑ N
HIGHLAND	16th STREET
	SQUAW PEAK PKWY




HOURS: Mon - Fri: 9 - 6 • Sat: 9 - 5 • Sun: Gone Fishin'




Arizona's Most Complete Saltwater, Fresh Water & Fly Fishing Store

IN MEMORY OF JAYNE

If you knew Jayne, you knew that you had a friend. If she had two of something, she gave you one. If she had one and thought you would like to have it, she gave that one to you. She is one of the very few most unselfish, loving, giving, and kindest person that I have been privileged to call my friend! They just don't come along every day!

Jayne liked hugs, she liked to give them and she sure liked to receive them. When Wimpy asked me if I would do this today, I asked him what he wanted me to say? With tears in his eyes, and a smile on his lips, he said just tell about the fun things that we did. The fun times that we've had!

Well, if I told about all of them we'd be here until the middle of July, 2003!!! So I'll just touch on some of the highlights!

We met Jayne and Wimpy, New Year's eve 1973 in Cholla Bay. In fact we met a whole bunch of people that night. We had a New Year's party that grew into an extremely large gathering! At one count there were 85 revelers in our house. The party of all parties it was fondly remembered as. We partied until we were partied out!

As people were leaving, they said that they would be back in the morning to help clean up. Yeah - oh sure - you know how that goes!! So I wrapped up the leftovers, what was only necessary to refrigerate, left the rest and went to bed! I couldn't believe it...sure enough the next morning, actually mid-morning, here they all came (not 85 of them). We picked up paper plates, plastic glasses, cans, empty bottles, confetti, streamers, hats, horns. Hauled bags and bags of trash, swept, mopped and got the place looking pretty good. Then, everyone was tire from all that work, so we sat down for a little breather, and it started all over again. Out came the leftovers, everybody left, returning home with their refilled ice chests, etc, and that lasted all day. There were so many funny things that happened New Year's Eve, and the next day and New Year's night! We still reminisce over this one and laugh just as hard now as we did then. I wish there was enough time to relate some of it - but maybe it was one of those "you really had to be there" times.

Memories - those can never be taken away. And that's where and how our friendship began with Jayne and Wimpy. I'm so grateful that it has lasted through all these years and through all the difficulties and obstacles that were thrown in our paths. We overlook them and continue on building the friendship stronger.

One summer (after retirements) 6 couples with motor homes and trailers took a month long trip, through Utah, Yellowstone, (we were booted out of what we thought was a really great camping place at Jackson Hole, but it was picnic area, not a campground and the ranger knocked on our doors, woke us up and escorted us to the parking lot in a campground (another one of those you had to be there).

(Continued from page 4) (News from Challa Chatter - 2)
Cholla on his ATV.

With all the news lately of our friends passing away, we need to all take a minute to think about how our lives can be so short, and we never know if we'll be here tomorrow. Take time to smell the roses, and be thankful for each day that we have. Be kind to your friends and neighbors, tell you kids and other relatives you love them, and live each day as though it may be your last. We love all of you! Please have a safe and happy summer.

Then on to Cor D Lane, Idaho, where we learned how to make a bonfire put out some beautiful colors (it's really magic) then across part of Montana, Washington where Jayne and Wimpy went Salmon fishing-with success-then we took the ferry across to Victoria and spent the day at the Butchart Gardens. It is enormous and beautiful and I know that Jayne smelled every rose that was in bloom and quite often just stood, with that wondering, content look, enjoying the beauty and appreciating

(Continued on page 9)

CHOLLA NEWS

June 9th

Summer has come to Cholla and that means most of the winter residents have gone north. Many of them from here go to the White Mountains. They often have Cholla gatherings in the Lakeside, Pinetop, Show Low area. Pat Goodin usually knows about these and you might be able to contact her at Rim Crest R.V. Resort (I don't seem to have her phone number) or email nolehasepat@yahoo.com. However, they are taking a trip back east for most of the summer so she may be gone when you get this Chatter. If you go to Wal-Mart you will probably know what is going on and will be glad to hear from you.

The coming events in the fall will be as follows:

The next phase of the Fishing Derby will be Aug. 30th & 31st and Sept. 1st & 2nd. There are still lots of fish to catch and categories to fill, so we hope all you fishermen and fisherwomen fisher kids will get out to beat the records!! Fishing has been improving this spring, so we hope fall will be even better. The final phase of the Derby will be Oct. 24th & 25th with the Fish Fry and awards on the 26th beginning about 4:00 p.m. Hope to see all there. Refer to the web site for more information or email Mike Traverse at fisherman2501@msn.com.

On Oct. 5th, there will be a "Sock Hop" at the Fry Shack sponsored by the Tucson Chapter. This should bring back a lot of memories!! If you have some clothing still around from that era, and can get into them, it would be fun to wear them. If not, be sure to attend anyway and have a good time. Everyone is welcome! This will be a good "back to Cholla" time to meet with those returning after summer and catch up on the news. This promises to be so much fun!

The next Cholla Chapter meeting will be Oct. 8th. It will be a pot luck at the Fry Shack, as we don't know how many people will be here to attend. Our Nov. meeting will be Nov. 12th at Desert Oasis, if Phil can arrange it. If there is a change, we'll let you know.

On Friday, Nov. 29th, there will be a craft sale to benefit the Christmas Party for our Mexican neighbors who live in Cholla. If you have a craft to donate, we would really appreciate it. There will be some crafting get-to-gathers in Cholla in the fall which are lots of fun. We'll try to get more information to you about this in Oct. Donna Wilhite is

(Continued on page 9)

CBSC Christmas Party

Now that summer is here, it's time to think about the CBSC Christmas party that we have each year for the Mexican families that live in Cholla. This year the party will be on Sat., Dec. 14th at the Fry Shack. Last year we gave food and toys to 37 families and 50 children. This year will probably be about the same.

This year, for various reasons, we are not going to have the "big Turkey round-up". Instead, we are having the "roast round-up". These will be easier to store and transport and the Mexican ladies that I talked to would really prefer these. There often are special sales on beef roasts. Most of us can take advantage of these sales at any time and purchase a 4-6 lb. roasts and freeze it and bring it to Cholla in Oct. or Nov. It won't take up much space. Bring it to Schmidli's or the Fry Shack to be put in the freezer there. Other food donations we are collecting: mayonnaise, peanut butter, canned fruit, macaroni and cheese and jam. Tucson Chapter always donates the canned corn, green beans and peas, but we can use other canned foods. We usually purchased the pinto beans, rice and lard in Rocky Point, but bags of any of these would be welcomed!!

If you would like to help with the toys, again we ask that you purchase \$8-\$10 toys. You may wrap if you like and label for girl or boy and appropriate age. Right now, the most need seems to be for boys ages 4-6 and girls 11-14. Diane Bennett is doing a great job coordinating the toys this year. You can contact her in Tempe at 480-940-9345 or email Ddb1125@aol.com. She will be able to answer any questions or accept any offers you have. If you want to purchase for a specific child, she can tell you what is needed. For my Christmas present from my grandchildren this year, I am having each of them purchase a gift for a Mexican girl or boy and wrap it. (Diane gave me this idea). Nancy Ryan and her family always donate school supplies, note books, pencils and crayons, so these are taken care of. However, books in Spanish and art type supplies are al-

(Continued on page 7)

(Continued from page 6) (CBSC Christmas Party)

ways great. If you donate books of any kind, be sure they are in Spanish.

Of course we always welcome cash donations. Please send these to Nancy Schmidli, P.O. Box 218, Lukeville, AZ 85341. We can do the shopping for you. Also, please come to the craft sale on Friday, Nov. 29th and do your Christmas Shopping. If you have craft items to donate please bring them to me, Nancy Schmidli, phone in Cholla 382-5036, or Donna Wilhite, phone in Glendale 623-939-5784, Cholla 382-5066. Nancy's email stuffie@prodigy.net.mx, Donna's email chollajohn@aol.com.

The Christmas party in Cholla is always very special! We'll have Santa and Mrs. Santa, Sal Otanez and Teri Wilson, come in their sleigh and crafts and food and of course piñatas. Then Santa and his helpers deliver the boxes of food and toys to the homes. Then, we have a pot luck dinner at the Fry Shack to celebrate the great time we always have doing this party. I hope many of you will join us this year.

Nancy Schmidli

AMIGOS de PUERTO PENASCO

Copy of thank you letter sent to Charlene Peterson on June 10th, 2002

Thank you for the generous donation received from The Amigos. For many years the CBSC has maintained the radio equipment and operations strictly with membership funds and for the past few years we have struggled due to the drop in membership. Most of the members are not fishermen and a small percentage use the radio because of the telephone availability.

We are aware of the importance to maintain the radios in service because many people who depend on it, use it. The majority of these people do not know who provides this service and we as a club need the help to continue it. We pay \$725 dollars monthly for operations in addition to the equipment and building expense as needed.

Again, thank you, we appreciate your past and most recent contribution towards this project and we hope that all that use channel 26 will become aware of the importance of continuing this service and will also contribute.

CHOLLA CHATTER

The Cholla Chatter is a monthly publication generated by the CBSC and features articles of information about club activities. It provides members an opportunity to keep up with news about Cholla Bay as well. Many home owners of Cholla Bay are part time residents or periodic weekenders. A tide chart is provided to assist fishermen and beach comers to schedule a visit during a preferred tide level.

Membership in the CBSC entitles participants to receive the newsletter and membership applications are supplied in each monthly Chatter. Opportunities to update a member's current address is also provided through a membership chairman of each chapter.

Classified ads can be placed in the Chatter by members at no cost. There is a nominal fee for non-members. Advertising opportunities are available for businesses and during the Fishing Derby all the Trophy sponsor ads are featured for three months. We encourage new ads to support the expense of the chatter. For information call the chairperson, Kelly Adams @ 480-345-0623.

Marina Montano is the current chatter editor. She volunteered over two years ago and has done a great job in spite of all her other responsibilities. Marina's work, school, and young daughter make it very difficult to continue to fulfill the chatter duties so she has asked for a replacement. The council has been looking for an interested person who can take over and who visits Cholla regularly. The council approved a monthly \$75 compensation for this service. If you are interested give Marina a call or any one of the council members.

COOK BOOK

The CBSC council is putting together a CBSC Cookbook which will be dedicated to Joan Dernberger, who loved Cholla and was wonderful cook. We have many good cooks both men and women in the club. All of our pot lucks are great, so we know there are a lot of good recipes out there. If you have any of Joanie's or your favorite personal recipes, please get them to us. Please email Enedina Otanez at rcci@uswest.net or mail to 1101 W. Calle Concordia, Tucson, AZ 85737. The deadline is September 15th, 2002 in order to have available for November craft sale.

ESPERANZA DE VIDA

On Sat., April 20th, Donna and John Wilhite, Ken Goodin, Adriana Adams, Jo Barnes, Frankie Palmer, Yvonne Arnett and Judy Tuffing made and/or served goulash to Esperanza de Vida. (I hope I didn't leave anyone out.) The report I got was that it was most delicious and all enjoyed it. Thanks so much to all of you for helping out. I know you all enjoyed it. It is such a fun and rewarding thing to do. We enjoy it and so do the children.

On Sat. May 11th we will be serving sloppy joes, or something like it. Anyway, hamburger mixture on a bun. I hope they will like it as much as they did the goulash.

Both of these "servings" were made possible through the generous donations of the following people: Gerry and Dottie Nelson, Lew and Agnes Felton, Donna and John Wilhite, Ginger Sinanovic, Pete and Janet Pisciotta, Paul and Grace Schoonover, Carl and Rosemary Murphy, Estelle and Bucky Maud. **Thanks so much, all of you!** And all of those kids at the Sunday school (on Saturday) thank you, too.

Nancy Schmidli

ESPERANZA DE VIDA

On Saturday, June 8th, Jo Barnes, Frankie Palmer, Yvonne Arnett and I made and took chicken-macaroni salad to Esperanza de Vida. It was a very "warm" day but we put some ice in tubs, salad in smaller tubs and left the Fry Shack about 4:00 p.m. There were only about 50 people there, but Pastor Manuel and the young children's leader (I don't know her name) were just as enthusiastic as ever. It still was a great experience and they seem to appreciate anything we bring for them to eat. Yvonne made the comment that they probably wonder what crazy thing we're going to serve to them next.

Of course, we won't be here to serve again until late Oct. In the meantime, if any of you would like to help serve, contact Connie Baldwin at baldwin127@cox.net. I'm sure she would appreciate any help she could get over the summer.

Thanks to all for your help and donations during the year! We'll be asking again in October.

Nancy Schmidli
Stuffie@prodigy.net.mx

(Continued from page 5)(In memory of Jayne

mother nature's handiwork. Then a few days in Oregon (even tried crab fishing there) and then back home down the west coast. Needless to say we laughed our way there and all the way home.

You all know how Jayne loved to hunt for shells. Well, it was her dream to find a little seahorse and it just happened that in Washington there was a little stand that had seahorses for sale. I bought one, wrapped it very carefully and carried home, then to Cholla Bay. One day we were out shelling and I hid it in some seaweed and walked on down the beach. On the way back to the sand buggy I got all excited and called her over to see what was there and sure enough there lay a little seahorse. She cried, and refused to pick it up because she was afraid that it would hurt my feelings if she took it. I insisted she have it so she finally consented. Wimpy, did you ever tell her how that got there?

(Continued from page 6) (Cholla News)

the contact person for this, 8225 N. 45th Ave., Glendale, AZ, 623-939-5784, or email chollajohn@aol.com. You can also contribute by shopping at the craft sale on that Friday of Thanksgiving week end. There are going to be some really neat art items by our local Cholla artists (we have several). You won't want to miss this!!!

We plan to have the cook books ready for sale at least by the time of the craft sale, maybe before. These will benefit the CBSC Council, which is in need of funds to meet our financial obligations for the year. Please see the cook book notice elsewhere in the Chatter and contribute to that.

The CBSC Christmas Party will be held Dec. 14th at the Fry Shack. Please see a separate article about that.

I hope you all are having a wonderful summer and I hope to see you in "The Bay" in the fall

Nancy Schmidli

CHATTER ADVERTISING RATES

10% DISCOUNT ON ADS PAID
FOR ONE YEAR IN ADVANCE
PRICES ARE FOR CAMERA READY ADS

FULL PAGE (7 1/2" X 10").....\$165.00 PER MO.
1/2 PAGE (7 1/2" X 4 7/8").....\$90.00 PER MO.
1/4 PAGE (3 1/2" X 4 7/8").....\$50.00 PER MO.
1/8 PAGE (3 1/2" X 2 3/4").....\$30.00 PER MO.
BUSINESS CARD (3 1/2" X 2")..\$20.00 PER MO.

CLASSIFIED ADS: Members in good standing may place classified ads. Ads are \$5.00 per month and should be approximately 50 word.

Mail requests to:
Marina I. Montano
1648 W. Wetmore Road
Tucson, Arizona 85705

Make checks payable to:
Cholla Bay Sportsmen's Club
Send your ad along with name, address, and phone number to our Advertising Chairperson:

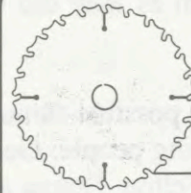
Kelley Adams
6824 S. Hardy Drive • Tempe, AZ 85283
(480) 345-0623



**SETH SMITH
PROPELLERS**

■ Propeller Specialists ■
Since 1958

2136 E. Indian School Rd. Dennis Martin
Phoenix, Arizona 85016 Phone (602) 468-3346



**R.C.C.I.
Carpentry, Inc.**

L-07 114934 • C-07 105526

1648 W. Wetmore Rd. • Tucson, AZ 85705
520-293-3446 • Fax 520-293-3509



'02 Calendar of Events

AUGUST

30th—31st Fishing Derby

SEPTEMBER

1st-2nd Fishing Derby
10th Tucson Chapter Mting
Las Margaritas

OCTOBER

5th Sock Hop - Fry Shack
8th Cholla Chapter Mting
Fry Shack - Pot Luck
24th– 25th Fishing Derby
26th Fish Fry & Awards

ADDRESS CHANGE!!

If you change your address, it is very important that you contact your Membership Chairman immediately. This is the only way you will continue to receive the CHATTER. The US Post Service will not forward or return Bulk Mail.

CHOLLA: NANCY SCHMIDLI
P.O. BOX 218 • LUKEVILLE, AZ 85341

TUCSON: SHIRLEY REID
1440 E. HAMPTON • TUCSON, AZ 85710

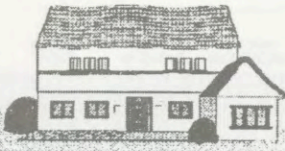
-OLD ADDRESS-

NAME _____
ADDRESS _____
CITY _____ ST _____ ZIP _____

-NEW ADDRESS-

NAME _____
ADDRESS _____
CITY _____ ST _____ ZIP _____
EFFECTIVE DATE _____





ALEJANDRO PORTUGAL M.

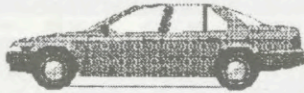
SEGUROS - INSURANCE

MULTIPLE FAMILY POLICY: This policy covers your house & garage and their contents against the following risks:
Fire, Wind Damage, Lighting, Break-in, and Satellite Antennas.

THE COVERAGE & PREMIUMS ARE LISTED BELOW

BUILDING	\$ 25,000	\$ 30,000	\$ 45,000	\$ 55,000	\$ 65,000	\$ 75,000	\$ 85,000	\$ 100,000	\$ 150,000	\$ 175,000	\$ 200,000	\$ 250,000
CONTENTS	5,000	8,000	12,000	15,000	18,000	20,000	25,000	30,000	35,000	40,000	50,000	60,000
BURGLARY	5,000	8,000	12,000	15,000	18,000	20,000	25,000	30,000	35,000	40,000	50,000	60,000
BROKEN GLASS	1,000	1,250	1,500	1,500	2,000	2,000	2,500	2,500	3,000	3,500	4,000	5,000
LIABILITY	60,000	60,000	60,000	60,000	60,000	60,000	60,000	60,000	60,000	60,000	60,000	60,000
Annual Premium	\$ 69.60	\$ 87.00	\$ 115.00	\$ 134.80	\$ 155.70	\$ 171.00	\$ 200.80	\$ 232.70	\$ 288.80	\$ 328.40	\$ 390.80	\$ 469.99
Earthquake optional												

Automobile Policies for all Mexico
We can offer you 4 types of policies:



- 1) Liability Insurance Policy which insures you with your Driver's License number, driving any vehicle (ATC'S. and road vehicles) Anywhere in Mexico. The premium is \$120.00 per two drivers and \$65.00 for one.
- 2) Liability Insurance policy which covers your vehicle anywhere in Mexico. The premium is \$60.00 per year.
- 3) Liability Insurance policy which covers your vehicle and trailer or tow. The premium is \$90.00 per year.
- 4) Full coverage Insurance anywhere in Mexico.

The annual premium is according to the car's value.

VALUE	PREMIUM	WITH TRAILER OR TOW
\$ 1,000 - \$ 5,000	\$ 130.00	\$ 170.00
6,000 - 10,000	173.00	215.00
11,000 - 15,000	190.00	230.00
16,000 - 20,000	205.00	245.00
21,000 - 25,000	230.00	260.00
26,000 - 30,000	255.00	275.00
31,000 - 35,000	270.00	300.00
36,000 - 40,000	290.00	365.00
41,000 - 45,000	310.00	390.00
46,000 - 50,000	330.00	430.00

SPORT FISHING BOATS: This covers fire, liability, sinking and theft. The annual premium is according to the boat's value.

VALUE	PREMIUM
\$ 10,000.00	\$ 225.50
15,000.00	337.92
20,000.00	447.92
25,000.00	555.50



BLVD. BENITO JUAREZ & SIMON MORUA
PUERTO PEÑASCO, SONORA 83550

PHONE: -11-526-383-2390
383-4070
FAX: 383-2324

PO BOX 402
LUKEVILLE, AZ 85341
e-mail: portugal@infitech.net.mx

TAKE THIS OPPORTUNITY TO INVITE A FRIEND TO JOIN THE CHOLLA BAY SPORTSMAN'S CLUB

This application and payment may be mailed to:

CHOLLA CHAPTER **TUCSON CHAPTER**
 P.O. Box 267 Shirley Reid
 Lukeville, AZ 85341 1440 E. Hampton
 Tucson, AZ 85719

DUES PER YEAR: \$30.00 SINGLE FAMILY

Membership dues and other activities of the CHOLLA BAY SPORTSMAN'S CLUB have funded the purchase of radio equipment and continue to support the operation and maintenance of Marine VHF Radio (Channels 16 & 26) for the Northern Sea of Cortez. Also CB Radio (Channel 3) in the Cholla Bay area. The CLUB pays the salary of the Cholla Bay Radio Operator, is prepared to direct Search & Rescue operations and when necessary can assist with some arrangements for the emergency transportation of critically ill or injured. The CLUB also conducts an annual Fishing Derby, publishes the monthly "CHOLLA CHATTER" and promotes good relations between American visitors and our Mexican neighbors.

Name: _____ Spouse: _____ Phone: _____

Address: _____ City, State: _____ Zip: _____

Children Under 18: _____ Names & Ages: _____ Cabin #: _____

PLEASE CHECK BOX FOR CHAPTER AFFILIATION

July • 2002 • Julio

August • 2002 • Agosto

DOMINGO SUNDAY	LUNES MONDAY	MARTE TUESDAY	MIERCOLES WEDNESDAY	JUEVES THURSDAY	VIERNES FRIDAY	SABADO SATURDAY
	1	2	3	4 INDEPENDENCE DAY (NO CLASSES)	5	6
7	8	9 SECOND SUMMER SESSION BEGINS	10	11	12	13
14	15	16	17	18	19	20
21	22	23	24	25	26	27
28	29	30	31			

DOMINGO SUNDAY	LUNES MONDAY	MARTE TUESDAY	MIERCOLES WEDNESDAY	JUEVES THURSDAY	VIERNES FRIDAY	SABADO SATURDAY
				1	2	3
4	5	6	7	8 SECOND SUMMER SESSION ENDS	9	10
11	12	13	14	15	16	17
18	19	20	21	22	23	24
25	26 FALL REHEARSAL BEGINS	27	28	29	30	31

Cholla Bay Sportsman's Club
 1648 West Wetmore Road
 Tucson, Arizona 85705

Presorted Standard
 U.S. Postage
PAID
 PERMIT No. 1498
 Tucson, AZ

DAVE/KELLEY ADAMS
 6824 S HARDY
 TEMPE AZ 85283

PLEASE CHECK BOX FOR CHAPTER AFFILIATION