

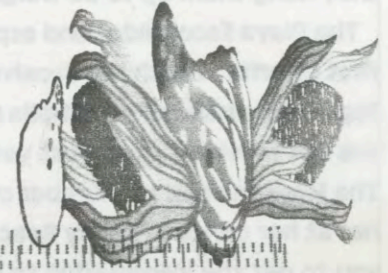
1648 W. Wetmore Rd.
Tucson, Arizona 85705
OFFICIAL PUBLICATION
OF THE
CHOLLA BAY
SPORTSMEN'S CLUB



PRESORTED STANDARD
U.S. POSTAGE
PAID
PERMIT NO. 1498
TUCSON, AZ.



Dave and Kelley Adams
6824 S Hardy
Tempe, Az 85283



NOVEMBER 2005

EDITORS: Pat Goodin and Nancy Schmidli
Contributors: Pat, Nancy, Betty Moore, Nancy Huff, Barb Dammann, Ken Goodin, Don Schmidli/Villa, Jennifer Rupnow

UPCOMING EVENTS

- November 5th** - The Cholla Chapter November Meeting at the Club House - Happy Hour at 5:00, Dinner about 6:00 - This will be a "4th of July in November" Party.
- November 12th** - OBSC
- November 24th** - Thanksgiving
- November 26th** - Possibly a Craft Sale/Flea Market at Club House - See article below
- December 3rd** - Chapter Dinner - See chapter article
- December 17th** - Christmas Party for our Mexican fans
- December 31st** - New Year's Eve (OBSC Party)



HAPPY THANKSGIVING !!

CRAFT SALE/FLEA MARKET
This year we would like to have a craft sale and flea market on Saturday, November 26th. Unlike other years, this one will not have a general white elephant sale. Each person will set up their own booth and pay a \$10.00 fee, which will go to the Christmas fund. You can have a table to sell your crafts or to sell your new or used items which you no longer want. (cont'd pg. 2)

CHOLLA CHAPTER NEWS
by Pat Goodin
Our October dinner was held at the club house on October 15th with about 40 people attending. Many aren't back yet from the summer, but those of us who were there enjoyed the great food. It was pot-luck, and as usual, we had more than we could all eat. After the dinner, a birthday cake was presented to me. Thanks everyone who came, and for your well-wishes.
Our board meetings will be held at 9:00 A.M. on the day of our dinners. Anyone wishing to attend may do so. We have tried having a meeting at our dinners, but everyone is having such a good time that they don't want to be bothered with "business". We will be having election of officers at our December dinner, so if you would like to be an officer, or be on the board, please let Don Schmidli know, as he's our nominating chairman. We need some new board members, so come and get involved!!
On December 3rd we'll have our last dinner for the year. Happy Hour at 5:00, Dinner around 6:00. Hope you can come and join us.

PROMOTORA TURISTICA PLAYA ESCONDIDA S.A. DE C.V.
CHOLLA BAY HOMEOWNERS

This is the time of the year to come down from the mountains and spend some of the choice months in Cholla Bay. The weather is perfect and the fishing, well it must be time for the big ones to be coming in because you can hear the fishermen radioling in for cameras to be brought down to the launch area where they hang them up to be weighed in. As they say, "Let the fun and games begin!"

The Playa Escondida, and especially Fayth Moody, have really put completions of your bank trusts as their first priority. Fayth has received a great response to her request for your cooperation. As we stated in the September issue of the Cholla Chatter, she does require each individual trust information if you are one that has not received your trust yet. We need the correct name of the person or persons the trust is listed under: The Manzana and lot number of the property you own. You can e-mail fayth@rockypointnetwork.com or call her at her office in Sandy Beach Resort Realty (Local 383-0609). U.S. number 623-298-4813. Another option for you to get the information to her is to stop at the Cholla Bay Sales Office (Local 382-5050). U.S. number 523-444-2327 or email chollabetty@yahoo.com. She will pass the necessary information on. The Homeowners Association has also formed a committee to work with Playa Escondida in completion of your trusts.

Read your newsletter and club bulletins to keep up with all the fun events coming up.

SEE YOU IN CHOLLA BAY!!!

COOK'S CORNER

from Nancy Huff

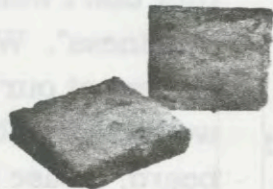
SPINACH CASSEROLE

- 2 eggs, well beaten
- 6 TBS flour
- 1 Pkg - (10 oz). frozen chopped spinach, thawed
- 1-1/2 cups cottage cheese
- 1-1/2 cups grated cheddar cheese
- 1/2 tsp. salt

Pre-heat oven to 350. Beat eggs & flour until smooth. Stir in spinach, cottage cheese, cheddar cheese and salt. Mix well. Pour into greased 1-qt. casserole. Bake 1 hour.

EASIEST CAKE

- Use 1 Pkg. chocolate cake.
- Stir in 16 oz. pepsi or coke.
- Bake as directed.



For a white or yellow cake mix, use sprite or 7-UP instead of the coke.

CRAFT SALE/FLEA MARKET (cont'd from page 1)

At the end of the sale, each person will take down their own booth and do whatever they want to do with any remaining items. Hopefully we will have enough interested in a booth to do this. People always look forward to a sale at this time of year. If you want to have a booth, please notify Nancy or Pat

HEALTH HINT

Skip the fat-free salad dressing. Full-fat and reduced-fat dressings help your body absorb nutrients from un-cooked veggies better than fat-free, say doctors at Iowa State University. They tested it on people and then took blood samples to measure the carotenoids, nutrients that may protect against cancer and other diseases. Those who ate full or reduced-fat dressings absorbed carotenoids far better than those who ate the no-fat, which allowed for virtually no absorption. We need fat to absorb carotenoids. But this isn't an incentive to drown your salad in fatty dressings, they say. Use reduced-fat dressings to maximize carotenoid absorption and limit fat intake. (Taken from Reader's Digest)

SICK BAY

There isn't a lot to report this month, but the less the better. We did hear that Bob Armenta, a former Cholla Bay resident was killed in a vehicle accident in Tucson.

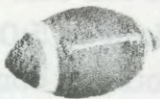
Shirley McDonald had an accident on her quad, but got away with a very sore butt - but no broken bones and is recuperating at her home in Cholla. (That's a lot of butts)

KEN'S TRIVIA

What is the maximum weight of a football, according to NFL rules?

ANSWER

20 1/2



Library News by Barb Dammann

Welcome back! The library is ready to go with lots of great contributions that have come in over the summer months. June, July & August saw 57 visits (be sure to mark the chart on the round table when you visit).

A big "thank you" to Frankie Palmer for the chairs & for making the cushions. Yvonne Arnett is in the process of decorating the walls with renditions of covers from books that we have available. Thank you Yvonne & all the helpers who are coming in to shelve books & clean.

There is a current need for western books for our collection & any books in good condition are appreciated. If we have duplicates, we share with the RP times & trailer parks. Please no magazines- we do not have the space for them. Once again, keys are available from Sally's Café, the Dammann's house, Gretchen at Casa Monica B&B, Pete & Shirley Peterson, & Jen Rupnow (in the yellow house across the street from the library). Please use & enjoy the library.

DERBY 2006

For the last two years grouper have been excluded out of respect for their annual spawning time & their fragile populations. This decision was made in 2004 by the derby coordinators and in 2005 by the CBSC board. On the meeting held on October 22nd 2005 the CBSC board decided again to not allow grouper & giant sea bass in the 2006 tournament. These decisions were made based on the biological facts, and the recommendations of scientists, older, respected fishers, and guides who have knowledge of grouper behavior and population status.

WHERE fish spawn & HOW FREQUENTLY they spawn varies greatly between species.

NOT ALL FISH ARE THE SAME and it is important that we base our decisions regarding animal populations using biological information.

MANY FISH	GULF GROUPEr
Are fast growing & short lived-	Are slow growing (approximately 7-8 years to reach reproductive age) and long lived
Reproduce: several times a year	Reproduce once per year
Reproduce throughout the course of the year	Reproduce in May-June (Derby Time)
Reproduce throughout the Gulf of California.	Reproduce primarily in our region on select reefs (frequented by sportfishers)
Are highly resilient to fishing pressure	Have low resilience and don't bounce back

- Gulf grouper populations are in trouble; their populations have been reduced 60-90% in the last twenty years. (Nelson, 2005; Myers & Worm 2003)
- The Gulf Grouper is Vulnerable to Extinction (& the Giant Sea Bass is Critically Endangered (IUCN RED LIST)).
- Gulf Grouper gather together in aggregations & reproduce in May-June (Sala et al. 2003; Saenz, et al. 2005)
- Fishing on any type of grouper during spawning can affect their population size, health & sex ratios (Coleman et al. 1996)
- We are one of the last active spawning sites of Gulf Grouper. New management guidelines for the Gulf Grouper are being proposed. (Saenz et al. 2005)
- Sport fishermen DO have an impact on fish (Coleman, 2004) & an impact on grouper populations in the Gulf of California (Gotschall, 1998)
- Marine scientists studying this species have recommended avoiding spawning groups to help ensure that the species will be around for many years to come.
- MANY people in the Cholla community have supported grouper conservation efforts by avoiding grouper during spawning time, practicing catch & release, starting a tagging program, and urging the CBSC to support the efforts.

The reality is that grouper spawning aggregations are very predictable, very avoidable, & very vulnerable to fishing pressure. A few individual sport fishers trying for a trophy can easily wipe out a spawning aggregation. Additionally, we had a very successful derby last year without including grouper & giant sea bass.

For these reasons the CBSC board has asked the Derby chairs to continue excluding the grouper & giant sea bass from the derbies.



“Let’s Go Fishing!”

From Rosario Villa, via the launching pad.

Fishing has been very slow lately due to the hot weather. However, 70 to 80 boats have been launched during and since Labor Day. Many jet-skis have been launched during that time, also. (If you can’t catch fish, ski?)

There have been 10 boats that have broken down: two at Bird Island, one the Navy towed to Peñasco, another was towed in by local pongo fishermen, one from the 22 mile reef. and the rest were towed into Cholla by buddy boats. (It’s pretty important to have a Buddy Boat.)

Villa is always involved in these breakdown and the boater give “many thanks” to Villa. Hopefully, the fishing will improve with the cooler weather and all you fisher people can “Go Fishing”

Don Schmidli

Cholla Bay Christmas Party for our Mexican Neighbors

This year’s Christmas Party for our Mexican families in Cholla Bay will be held on Sat., December 17th at the clubhouse. Last year we gave food boxes to 35 families and toys to 86 children.

Again, we will need at least 35 beef or pork roasts, 5 or 6 lb. (or larger) roasts are best because they always serve big extended families. Some use them for making their tamales. We also are asking again for peanut butter and jelly or jam, mayonnaise, canned fruits and vegetables, flour and canned or packaged soups such as top remain. In the way of toys, we always need balls of all kinds and baby dolls, painting kits, beading kits, and books, but only in Spanish.

Of course, we can always use money!! Bring your donations to Nancy Schmidli or Agnes Felton in Cholla.. Send checks made out to Cholla Bay Christmas Fund, to Nancy Schmidli, P.O. Box 218, Lukeville, Az. 85341. If you have questions or want to volunteer to help, call me at 382 5036 or email me at stuffie@prodigy.net.mx.

Address Change

If you have an address change, please let us know right away so that you will continue to receive the Chatter. The Chatters are mailed out in bulk mail and the U.S. Postal Service will not forward bulk mail. Send address changes to:

Nancy Schmidli, P.O. Box 218, Lukevill, Az. 85341



This sea lion has been coming to Tucson beach for over a month. He usually comes into the sandy area between the rocks in the evening and goes out during the day. One theory is he has come

in here to die. Another theory, he has been run out of his group or pod by other male sea lions. Whatever the reason, he is getting a lot of attention. People come every day to see him. Some have gotten very close but I don’t know if he has let anyone touch him. We are leaving today, but I will try to get the “rest of the story” (what happens) for the next chatter. I just hope if he is dying that he goes to another beach to do that. It raises such a stink Nancy Schmidli



MEMBERSHIP NEWS:

“Welcome Aboard” to the following new members:

Steve and Connie Canant from Tucson joined during the summer. They didn't list having a cabin in Cholla so we hope they enjoy coming to our “village” often for fishing and/or relaxing.

Jerry and Jean Langston from Tempe. They do have a cabin in Cholla and they also joined during the summer. We hope to see them in Cholla, perhaps at a CBSC meeting.

Vernon and Jodie Peltz from Tucson. Vernon was doing some AC repair for the Hagers in July, before Randy passed away, and Maxine found out he comes to Cholla fishing and immediately signed him up for the CBSC. Thanks, Maxine.

We hope these new members come to our CBSC meetings so we can get better acquainted. We now have 257 memberships in the Cholla Chapter and 41 memberships for the Tucson Chapter. For the year of 2006, I, Nancy Schmidli, will be the council membership chairperson. That means that all CBSC memberships for both Cholla Chapter and Tucson Chapter will come to me. I will give the monies for membership to the chapter of your choice. There is a space on the membership form for this choice. Since I make the labels for the Chatters, this will make it simpler for me and Shirley Reid and we do like to keep things simple.

Dues sent in now will be for 2006, so please feel free to fill out the form below and mail it. (Don't forget the check) I hope you all had a great summer, although to sailed by so fast, and I hope to see you all in “THE BAY”! Nancy Schmidli

Membership Application 2006 Annual Dues \$40

Membership dues and other activities of the Cholla Bay Sportsmen's Club funded the purchase of radio equipment and supports the maintenance and operation of the Marine VHF Radio (channels 16 & 26) for the Northern Sea of Cortez & CB radio(channel 3) in the Cholla Bay area. The CBSC pays the salary of the radio operator, assists in search and rescue operations and, when necessary, can assist with some arrangements for transportation of critically ill or injured. The CBSC conducts the annual fishing derby, publishes a monthly newsletter and promotes good relations between American visitors and our Mexican neighbors.

Name: _____ Spouse _____

Address _____ City _____

State _____ Zip _____ Phone _____ Cabin # _____

Email _____

Summer Address: If you want your chatter sent to a different address June to Sept.

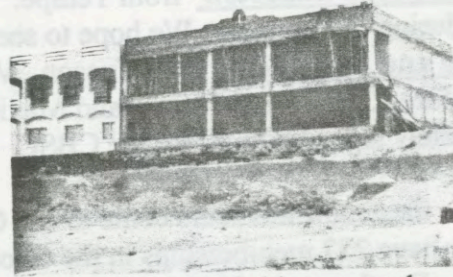
Please check the chapter of your choice Cholla Chapter Tucson Chapter

Mail to: Nancy Schmidli, P.O. Box 218, Lukeville, Az. 85341

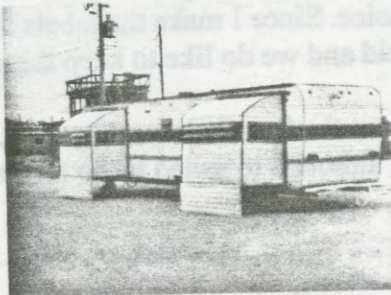
WHAT'S HAPPENING IN CHOLLA



The Cholla Motel was once here.



Condos overlook ~~were~~ bigger condos will be.
WHERE



Who said "no more trailers in Cholla"?



Here's one on Pelican Point.



This park model is nice. Where's the pool??



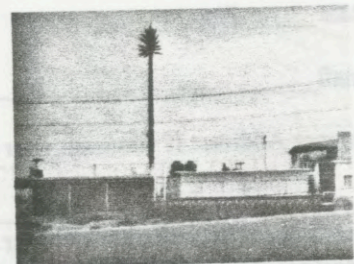
Shirley Reid has a nice new bathroom.



Tearing down old houses to



build new condos.



The cell tower is still standing