



OFFICIAL PUBLICATION OF THE CHOLLA BAY SPORTSMEN'S CLUB

Volume 33, No. 12

December, 1990

WELCOME



NAMIBIANO

**COUNCIL OFFICERS**

CHAIRMAN.....BILL COUGHLIN 274-1448  
 V.CHAIRMAN....DAVE CONNER 820-3311  
 SECRETARY....ELLEN COUGHLIN 274-1448  
 TREASURER.....GLEN McWHORTER 247-5290

**ALTERNATE REPRESENTATIVES**

CHOLLA	PHOENIX	TUCSON
SALLY NEWMAN	LEW FRAZIER	RAY HAYS
RALPH SMITH	JOE REINERT	BOB ROTHROCK

**CHOLLA CHATTER, OFFICIAL PUBLICATION**

Sheila Chamberlain  
 815 N. 52nd St. #1386  
 Phoenix, AZ 85008  
 Phone: 275-1405

PUBLISHER.....TECHNIPRINT

**COUNCIL REPRESENTATIVES**

P SHARON ALLEN.....269-0950  
 P JOE BLUNK.....246-0647  
 P DAVE CONNER.....820-3311  
 T BILL DRAKE.....886-6500  
 P RICK ELDER.....820-2837  
 C BEV GLASENAPP.....CHOLLA  
 P CLIVE JORDAN.....955-7022  
 P NANCY LA POINTE....279-3628  
 P MARTY MARTIN.....789-0725  
 T PAUL MORAN.....  
 C OSCAR NEWMAN.....CHOLLA  
 T ALAN PETERSON.....327-2570  
 P JOHN ROBSON.....978-8846  
 T SAMMIE ROTHROCK....795-6522  
 P PAUL VANOVER.....841-6416  
 P JOHN WARREN.....274-1118  
 C HARRY WILCOX.....CHOLLA

Chatter Advertising  
 SHEILA CHAMBERLAIN  
 815 N. 52ND ST. #1386  
 PHOENIX, AZ 85008 PH: 275-1405

**COUNCIL COMMITTEE CHAIRPERSONS**

<b>FISHING DERBY CHATTER</b>	MARTY MARTIN ELAINE JORDAN SHEILA CHAMBERLAIN
<b>SEARCH &amp; RESCUE RADIO BUILDING BIG TEN</b>	WAYNE KUDIS ALAN PETERSON RALPH SMITH LEW FRAZIER
<b>CHRISTMAS PARTY AL SCOTT AWARD</b>	SUE KUDIS SHIRLEY PETERSON



\*\*\*\*\*

**CHOLLA BAY CHAPTER**

PRESIDENT HARRY WILCOX.....CHOLLA  
 VICE-PRES. RALPH SMITH.....CHOLLA  
 SECRETARY GINGER SINANOVIC.CHOLLA  
 TREASURER ROY HAENFLER.....CHOLLA

**BOARD OF DIRECTORS**

MIKE BASTA.....CHOLLA  
 MARGE DUMAS.....CHOLLA  
 BEV GLASENAPP....CHOLLA  
 BETTE HORTON.....CHOLLA  
 BOB LORENC.....CHOLLA  
 GLENDA MAUD.....CHOLLA  
 OSCAR NEWMAN.....CHOLLA  
 CHUCK PAYNE.....CHOLLA  
 ELAINE RIMSZA....CHOLLA  
 TONY RIMSZA.....CHOLLA  
 VI SCHMERFELD....CHOLLA  
 GAYLE SHARP.....CHOLLA

**PHOENIX CHAPTER**

JOHN ROBSON.....978-8846  
 SHARON ALLEN.....269-0950  
 NANCY LA POINTE..279-3628  
 PAUL VANOVER.....841-6416

DAVE CONNER.....820-3311  
 RICK ELDER.....820-2837  
 LEW FRAZIER.....946-6986  
 VON FRAZIER.....946-6986  
 CLIVE JORDAN....955-7022  
 ARLENE MARTIN...789-0725  
 MARTY MARTIN....789-0725  
 JOHN WARREN.....274-1118

**TUCSON CHAPTER**

BOB ROTHROCK.....795-6522  
 RAY HAYS.....721-2832  
 JOAN NICHOLS.....326-7145  
 MARY HAYS.....721-2832

CHUCK DERNBERGER..298-6058  
 BILL DRAKE.....886-6500  
 PAUL MORAN.....  
 ALAN PETERSON....327-2570  
 GENE REID.....326-1090  
 GEORGE SANDOVAL...  
 DEAN TOZZI.....298-5100  
 BETTY YEATES.....883-1835

**AUDIT**

JOE BLUNK & JOE REINERT

PEGGY DRAKE & SAMMIE ROTHROCK

**MEMBERSHIP** MIKE BASTA.....CHOLLA

JOE & MARY REINERT..277-7378  
 P.O. BOX 7171  
 PHOENIX, AZ 85011

Shirley Reid...326-1090  
 1440 E. Hampton  
 Tucson, AZ 85719

**SICK BAY** VI SCHMERFELD...CHOLLA

ARLENE MARTIN...789-0725

IRENE DRAKE...327-0236

\*\*\*\*\*

**SEARCH & RESCUE**

**PHOENIX  
CO-CHAIRMAN**

RICK SMITH  
 1732 E. CHEERY LYNN  
 PHOENIX, AZ 85016  
 PH: 266-4930

**CHAIRMAN**

WAYNE KUDIS  
 CABIN 432 CHOLLA BAY  
 PHX. PH. 266-4930

**TUCSON  
CO-CHAIRMAN**

BILL DRAKE  
 845 S. CAMINO SECO  
 TUCSON, AZ 85712  
 PH. 886-6500



**CHOLLA BAY RADIO OPERATOR** AUGUSTIN LEON

**AM MARINE RADIO  
SHIP TO SHORE**

2182..SAFETY & CALLING  
 2555..BOAT TO SHORE  
 1638..BOAT TO BOAT

**CB RADIO**

CHANNEL 3...MONITOR  
 CHANNEL 9...EMERGENCY  
 FOR CB CONVERSATION, 2  
 ANY OTHER CHANNEL

**VFH**

CHANNEL 16...EMERGENCY  
 CHANNEL 26...MARINE  
 FOR VFH CONVERSATION,  
 ANY OTHER CHANNEL.



NEW MEMBERS

Phoenix Chapter:

- Nikki Battaglia
- Lois Brock
- Larry & Barbara Brown
- Ronald & Laureen Ernst
- John & Cora Hornick
- Phil & Sandy Matthews
- Jim & Charlene Plemons
- Millie Rowland
- Craig & Sally Tickler



Los Margaritas  
on Grant Road

**2nd TUESDAY OF EACH MONTH—7:30 P.M.**

**PHOENIX**

Arizona American Italian Club  
7509 North 12th Street

**2nd WEDNESDAY OF EACH MONTH—7:30 P.M.**

**CHOLLA BAY**

See your Chapter Officers  
for time and Place.

**2nd TUESDAY OF EACH MONTH---**



**CALENDAR  
OF  
EVENTS**

- December 3.....Phoenix Board Meeting
- December 4.....Tucson Board Meeting
- December 11.....Cholla Board Meeting
- December 11.....Tucson Monthly Meeting
- December 11.....Cholla Monthly Meeting
- December 12.....Phoenix Monthly Meeting



**QUE PASA**

\*\*\*\*\*  
\* LET THE EDITOR KNOW \*  
\* BY THE 18TH OF EACH \*  
\* MONTH. \*  
\*\*\*\*\*

PLEASE NOTE

The chatter mailing list is being up dated. If you have any complaints contact Sharon or Skip Allen at 269-0950.



**DRAFTING SUPPLIES**  
**ENGINEERING SUPPLIES**  
**BLUEPRINTING**  
**PHOTO REPRODUCTION**  
**PHOTO ENLARGEMENTS**  
**FAST SERVICE**

**257-0686**

**TECHNIPRINT**

2545 NORTH 7TH STREET PHOENIX, ARIZONA 85006

#####  
#  
# ATTENTION ALL MEMBERS IT'S #  
# ELECTION TIME. #  
# #  
#####



By: Marie MacGill

Our November 14th meeting was opened at 7:45 by our president John Robson to a large crowd with our guests Sr. Raul Taylor who is with the Corporation that Sr. Gus Brown has and two state of Sonora officials Sr. Prospero Soto and Sr. Paco Monzo Taylor I think I speak for us all when I say that it was a great pleasure having these kind Gentlemen with us. They have us spoiled and we will miss having them at all of our meetings

Joe Reinert led with the Pledge of Allegiance Then President John Robson introduced the officers and council members. Due to the time limit and large number we as members skipped our introductions. The secretay and Treasurer's report and also sick bay and Ship Store did not make their report.

Sr. Raul Taylor gave a talk on the Bank Trust and Sr. Soto and Sr. Poco Taylor told us about it and they all answered the questions about the Bsnk Trust. One of the main questions was "Who will we pay our rent to after the first of the year"? Sr. Raul Taylor said we should pay as before and if the Trust came through before our payments were up that the Bank would make the adjustments to the Trust.

The Secretay and Treasurer's report and also Sick Bay and membership along with Ships's Stores reports were dispenced with.

The Brown Bag Auction will be held at the December meeting and an estimated amount will be donated toward the Christmas Fund, so be looking forward to the fun for this meeting

Connie Norsworthy announced that the Fall Picnic as a success and that everyone had a good time She said she and John will not be in charge of the Picnic next year, that they had had it several years and would like for someone else to take over.

There has been a Big Change in the Christ mas party. Sue Kudis has resigned and Shirley Peterson of #80 in Cholla will be in charge. She will need a lot of help, so please see her and give her all of the help that you can. She will need lots of Toys, Canned Goods, Apples, oranges and 150 pounds of lard. If you can't take them down please call one of the officers and they will see that some one takes them down The party I understand in on the 15t

The Secretary Nancy LaPointe read a list of nominees of officers for next year They were as follows:

President John Perrotta  
Vice President John Robson  
Treasurer Paul VanOver

Nancy asked a volunterr from the floor for Secretary, but did not receive any responce.

It was a pleasure having Ralph and Phyllis Smith with us. Ralph is V.P. for the Cholla Bay Chapter. They had been spending the summer at their Mesa home, and on their way back to the Bay on Friday and taking their eleven year old grand daughter with them,

A very pleasant surprise was having Rick Bell and wife Mary Bell back with us after a lengthy absence, and also Jim and Elnora Westfall who had been gone for several months. I'll tell more about that next time.

Paul and Joan Vanover had just returned from Hawaii where they had been having fun in the Islands from October 26th to November 11th Their son Steve paid their fare over and back for their 42nd anniversary. They had such a great time that Joan was still bubbling over with joy

Door prizes were as follows:

Sheila Chamberlain	Portable Char- cole Grill
Lew Frazier	Igloo Playmate chest
John Norsworthy	Picnic table.
Mary Reinert won the Christmas Raffle certificate for the bottle of Cheer.	
Mary take it easy with Christmas coming up.	

Until next time,  
GOD BLESS! and have a HAPPY HOLIDAY  
SEASON.

# THE MAT CORNER

**DODY VOSS**  
1020 S. Mill, Tempe 85281  
(602) 966-2055

Custom  
Picture  
Framing  
Poster  
Gallery  
Artist  
Papers

CHOLLA BAY CHAPTER GENERAL MEETING

'Doc' Wilcox

The Cholla Bay Chapter meeting was held at La Curva Restaurant on November 13th at 6:00pm. With 36 members and 3 guests in attendance for a wonderful meal.

We had many happy raffle winners. And on Friday November 23rd at 8:00am at Brown Plaza a raffle will be held.

December meeting to be held at Playa del Rey Restaurant on the 11th at 6:00pm with the board meeting being held at 5:00pm.

The Nominations for 1991 are as follows:

- President - Roy Haeufler
- Vice-President - Tony Rimsza (program director)
- Secretary - open (chatter & sick bay)
- Treasurer - Shirley Haeufler
- Board of Directors - Don Shmidli  
Oscar Newman  
Jack Lee

others are:

- Membership - Mike Basta
- Ship Store - Betty Horton
- Drawing - Walt Kirkwood



SALE ENDS 23 DECEMBER 90

SEA OF CORTEZ • SOUTHERN CALIFORNIA • BAJA  
**SALTWATER FISHING TACKLE**

WE HAVE A GOOD SELECTION OF  
QUALITY TACKLE AT FAIR PRICES

RODS • REELS • LURES • LINE • TERMINAL TACKLE

<b>Season's Greetings</b> to all Club Members & Friends! Thank You for a fine 1990! May 1991 bring all of you Smooth Water and Big Fish!	<b>HOLIDAY SPECIALS</b> <b>PENN REELS</b> 9/0 SENATOR \$119.95 MOD 115L SALE 6/0 SENATOR II \$99.50 "H-SPEED" MOD 114HL SALE		JUMBO OR GIANT SCAMPI® TWIN TAILS ASST COLORS <b>\$249</b> EA YOUR CHOICE <b>JIG HEADS</b> NOW WITH HEAVY TIPS 16 oz. <b>1.79</b> EA
	<b>ANDE LINE</b> 1lb. Spools \$24.99 EA CHOICE 125 lb. • 150 lb. • 200 lb.	NOW IN STOCK LARGE SELECTION CALSTAR RODS UFO JIGS BOJO LURES CISCO KIDS NEWELL REELS	

✓ CHECK US FOR ALL YOUR OUTDOOR NEEDS: GUNS • AMMO • ACCESSORIES ✓  
 C.B.S.C. MEMBERS MUST SHOW I.D. CARD FOR THESE PRICES & SPECIAL DISCOUNTS

ALL PRICES CASH OR CHECK ONLY - NO CREDIT CARDS PLEASE. SUBJECT TO STOCK ON HAND  
**SPORTSMAN'S CLEARING HOUSE, INC.**

*"Wilderness Outfitters"*  
 OPEN: Mon - Fri: 10-7pm  
 Sat: 9-5 pm  
 Sun: 12-5 pm  
 1325 W. UNIVERSITY DR.,  
 TEMPE, AZ 85281  
**PHONE (602) 968-7481**  
 OPEN: Mon - Fri: 10-7pm  
 Sat: 9-5 pm  
 Sun: 12-5 pm

**Baja Sailing Expeditions**

- Swim
- Scuba Dive
- Fish
- Relax
- Camp
- Enjoy

Phoenix Telephone: (602) 789-SAIL

**ANNOUNCEMENT !!**

Congratulations to Elaine Jordan on the birth of her son Nicholas Ryan on November 13th. A quote from the mother "he is beautiful". Weighing 6 lbs. and is 19 & 3/4 inches long. Also congratulations to grandparents Bogie and Hannah Jordan.

**RESTAURANT**  
**"PLAYAS DEL REY"**

Mexican Food  
 Sea Food  
 Steaks  
 International Food  
 Breakfast 7-12  
 Blvd. Kino y Cedros  
 Tel: 3-38-12  
 Puerto Peñasco, Sonora  
 Mexico



## TOP OF THE HILL VIEW POINTS

By: Thelma Brown

Bill and Debbie brought me to the Bay mid October. Many people came that weekend and it was hot.

Eight people were at Nole Hace, six from Los Cruces, two from Pennsylvania. The usual trips to Black Mountain and the Mall entertained the quests. All had fun except Ken Goodin has the gout.

Seemed good to have the Busfields come the same time as I did. They stayed six days. Evie B. looks good.

Bob and Barb Dammon were down from Phoenix entertaining his sister Evelyn and husband Neil Anderson, new bride and groom. Congradulations! Another trip brought newly weds daughter Gail and Don.

Everyone in Cholla Bay is saddened by the death of "Sea Cliff" Cliff Burrows. He passed away the evening of October 11th. He planned on coming to the Bay the 12th then his driver was ill, so they were coming the 17th. He died of Emphysema and Cardiac arrest. He will be sadly missed by all. Our sympathies go to Virgie and the family. He and Virgie have been coming to the Bay since 1962.

Bogie and Harmah Jordan had an emergency room set up for John Upchurch who suffered a kidney stone. Bogie took him to a hospital in Phoenix where the problem was taken care of, after he had treatment at a clinic in Puerto Penasco. John bought Mary Simpson's place in front of Jim Berry's. It's a show place now.

Ralph and Phyllis Smith are back. I'll let her tell of their journey this past summer. Most interesting.

Betty and Art Moore's place had four guests from Cottonwood. Paul and Nina Moore and Harley and Doris Guinn from The Ladies do lovely craftwork, quilts and punch rugs.

The heavy winds moved real estate around for a couple of days and gave everyone a respite from the heat. But after two days it's hot again.

Charlie and Joan Tulley and daughter Virginia were at their cabin when not out fishing. Joan caught a couple of pintos. Charlie and Joan are enjoying his retirement. She had made stool taps and Charlie was putting them together. Very industrious people.

The Hallween Parties October 27th at the OBSC and at JJ's were scarcely attended. Those that attended were mostly not in costume. No one knew Vi Schmerfeldt till she opened her mouth. The Old Boys and JJ's worked hard decorating and the snacks and cold drinks were aplenty at the OBSC.

Finally, a spite and malice game got going at Peterson's with Betty Horton, Thelma Brown, Vi Schmerfeld and Shirley playing. There were more laughs and memories repeated than serious card playing. Lots of people in to see Pete and Shirley's new 12 volt refrigerator. A beautiful piece expensive but working by the sun is an asset. Doc Harry Wilcox has one, too.

Lots of groups going to the Puesta del Sol for Happy Hour. Good Margarites then on to the choice of place for dinner. Such beautiful sunsets, white sand, lovely patio and the hotel lighted a short distance away makes one think of the French Riviera.

Joyce Hitchcock has gone to Chandler she'll have eye surgery for cataract removal. This was just for preparation. Good luck Joyce.

Ralph and Lillie Douglas from Sedona have been visiting at Troxell's where they celebrated their 65th anniversary and Troxell's celebrated their 51st.

There's a new cafe in town "Irresistable Cafe". They make the best donuts also hamburgers. Price is right. Located same street as the Villa Grenada. A friend who's always dieting told me about it.

Jean Ostbury cabin #6 stopped by and Stan Christian will be in the Bay December 12th volunteering their help along with two other volunteers for the Christmas dinner. They're willing to do anything cook, serve, setup clean up. Aren't they wonderful to volunteer their services?

Ralph and Phyllis Smith were here a short time while I was in the Bay. Tony and Elaine Rimsza and the Smiths fished alot and caught a lot. Tony is always so generous sharing his catch. Vi Schmerfeld and I had a couple of good dinners. She makes Trigger fish taste like Orange Roughy on the grill.

Bette Horton made some apple butter and some tomato jam. She's a gourmet canner along with her other talents.

TOP OF THE HILL VIEW POINTS CONTINUED

So glad to see some one at Burrow's cabin. Virgie came with her daughter Pam and grandson Casey, Darlene and Dale, Earl and good friend Olive Bleuel. Olive and George (who is now deceased) had a place here for several years. She now lives in Payson, welcome back Olive.

People were also in "Pieces of Eight" next to Virgie's. He's been away for years.

My tree looks like Christmas with birds in a row on so many branches. Vi Schmerfeld and Juliene Wallace donated bird seed. I had more birds than usual because some of the regular feeders weren't in the Bay.

A big wind came up the night of November first. Lasted a week and changed the climate. People going from shorts to sweats that first weekend. People who came to do work were forced to put it on hold. The wind shortened their stay. Because People couldn't fish, the poor sea gulls were hungry. They were begging at my house. They gobbled stale bread, cookies and some dry cat food.

Veterans Day weekend was warm again. This was Sharon and Skip Allen's 25th anniversary. Such a happy couple, notice her diamond ring. Anniversary present from Skip, she's going to keep him another 25. Congradulations!

Lots of visitors at Brown's the Veterans Day week. Bill, Debbie, Ed and Mary Shepard and son and wife and 10 month old twin girls, beautiful.

Veterans Day Vi had the family, Susan (daughter from Park Lake, Utah) Wally, Elizabeth, Danny, Wanda Gill and I for a Pre-Thanksgiving dinner. The whole turkey menu, delicious! She even made apple pie. There was a repeat Monday night. Tuesday Susan and Vi went to Phoenix so Susan can take the plane at noon.

Virgie's company all left but Olive, Monday the 12th.

Lee and Doug Cashion were visiting the Bay. I hope to see them.

Lots of people sick with the flu. Various types- head cold like allergies, chest colds, stomach flu too. Many people didn't leave their cabins all weekend. Dammon's got well enough to go to a Progressive dinner Sunday night with Schillingers, Beams, Barnes and back to Dammons. Barb said it was fun.

Bless Sharon Allens heart, she's going to help with the Chatter. Good luck to Elaine Jordan.

Will look forward to being back in the Bay in March.

Happy Holidays To All!

Big Mama  
Big Daddy

Sorry typing is so bad.  
It's the machine.

LICORES Y CURIOS  
VASQUEZ

TEL. 5321189

PROP.  
LIONEL VASQUEZ

BLVD. DE LAS AMERICAS No. 11  
SONOYTA, SONORA, MEXICO



TEXACO



Clean Restrooms

*Bill Henry's*

NAPA AUTO

SODAS - FAST FOODS - GROCERIES  
PARTS - RADIATORS - TIRES - GAS - OIL - TOWING

**ONE STOP DOES IT ALL**

Gila Bend 683-2415



The Old Roy's Social Club would like to announce its future activities for the upcoming months. Keep your calendar open for these functions.

December 31st - New Year's Eve Party. Last year's was a huge success and this year's should be great with a "Blue Moon" theme. Check your calendar. Festivities start at 3:00 p.m.. Price is \$10.00 per person. Dancing, food, drinks and favors included, of course. Traditional champagne for midnight - beverages available for the non-drinkers. Reservations limited to 125 people, so please make them early with Bogie Jordan or Sue Kudis.

February 9th - First Annual "Mardi Gras" parade and party. Join the traditional parade through Cholla with your decorated jeep, buggy, bike or anything with wheels. Wear costumes and join us on foot! Party will follow at the OBSC building. More details at a later date.



### Eastside Tackle and Bait Shop

SALT AND FRESH WATER TACKLE  
**ALL KINDS OF LIVE BAIT - FLY MATERIALS**  
 LICENSES AND TAGS  
 ROD AND REEL REPAIRS - RENTALS

5552 E. SPEEDWAY BLVD. - TUCSON, AZ 85712  
 PHONE: 745-0003

Directors  
 Mortgage Loan  
 Corporation

## DIRECTORS

**Lynn Timothy**  
 Office Supervisor  
 Voice Pager (602) 239-0878  
 Fax (602) 866-8902

11225 N. 28th Dr, Suite D106  
 Phoenix, AZ 85029  
 Bus. (602) 866-1005

## Mac's Marine, Inc.

**SALES • SERVICE  
 BOATING ACCESSORIES**

**GREGG E. McANALLY**  
 President  
 FAX (602) 748-8384

4888 E. 22nd St.  
 Tucson, Arizona 85711  
 (602) 748-2628  
 (602) 748-BOAT

abarros patricia

remon & patricia store

GROCERIES

FILE WORKS

TYPICAL MEXICAN

CURIOS

CLOTHES

BOTTLED WATER

BLOCK ICE

ORDER CABIN WATER CHANNEL 3

BBY GIFTS



S U R V E Y

1. How often do you attend the Cholla Bay Sportsmen's Club monthly meetings?  
a. every meeting                      b. often  
c. sometimes                            d. never
2. Do you enjoy the programs at the meetings?  
a. yes            b. no            c. I would like a program about:
- 
3. How often do you, family and/or friends go to the "Bay"?  
a. once a week                      b. once a month  
c. seldom                              d. every chance I get
4. Do you participate in the CBSC activities such as boat or jeep trips?  
a. yes            b. no
5. When at the "Bay", how long do you usually stay?  
a. weekends only                      b. one week  
c. one month                            d. more than a month
6. When at the "Bay", do you eat at the restaurants in  
a. Rocky Point            b. Cholla Bay            c. both
7. Do you buy gasoline, propane and other supplies in Rocky Point or Cholla Bay?  
a. yes            b. no            c. sometimes
8. Do you enjoy  fishing             shelling             boating  
 ATC & dune buggy riding             Jeep trips             other \_\_\_\_\_
9. Do you buy fresh fruits and vegetables in Rocky Point?  
a. yes            b. no            c. no, because I'm afraid to eat them
10. Do you attend and enjoy the CBSC  Steak Fry             yes             no  
 Fish Fry             yes             no  
 Fishing Derby             yes             no  
 Annual Campout             yes             no  
 Annual Picnic             yes             no

COMMENTS REGARDING ANY OF THE ABOVE:

Thank you for taking the time to respond. Please return this survey to the Cholla Bay Sportsmen's Club, P.O. Box 7171, Phoenix, AZ 85011.

**BUY  
SELL  
TRADE**



FOR SALE

1984 Wellcraft 2900 spt-fisher (Fly bridge) w/ twin newly rebuilt 270 crusader engines (20 hrs each). Fresh water cooled.. Halon and sniffer systems, 2 depth finders one is Lorrance, VHF full canvas cover plus fly bridge and deck benni in new blue canvas. Full galley with alc/electric range, microwave oven, full electric head with shower. Sleeps four. AC/DC reffridgerator. Full dock side power. 2200 Honda generator on bow, teak bow pulpit and swim platform, 28' 5/16 chain w/ 200' anchor line. Ideal wench on teak platform (the best) 4 batteries. Four props, two standard and two power. 200 gal gas tank, 40 gal fresh water tank, 9'deck. Original owner and has had excellent care and mainly used for some real delightful trips out of Kino Bay. Stay out and anchor for 4 or 5 days. Have all maintenance records and original instruction books. This boat is loaded with all kinds of extras. Will consider trade for smaller boat. Call Fred Nemeth at (602) 247-2332 in Peoria, AZ.

Biggest 2-door Servel refrigerator.  
Good condition. \$750.00  
Call 967-3513

Wellcraft Sport Fisher, center console,  
17 ft. , bimini top, 30 gal. gas tank,  
galvanized trailer, 85 hp evenrude,  
very sea worthy. \$3,500

Call Mark at 829-6513

1983 33ft Imperial Holiday Rambler  
Motor Home. Like new, many extras.  
Call Bob Pennington - Phx. 276-9554

4000 Watt Lister desiel generator.  
Low hours. In Cholla, Cabin #472.  
Call Bob Pennington - Phx. 276-9554

Send ad to 815 N. 52nd St., #1386  
Phoenix, AZ 85008 along with \$3.00.  
As a member your ad will run for  
free for 2 months and the third  
month and there after is \$3.00 a  
month. If your item is sold before  
the third month and the editor is  
notified before then you will be  
refunded your \$3.00. Please enclose  
name, address and phone number  
with your ad. Thank-you.

FOR SALE:

Used Arco solar electric panels,  
35 or 40 watts, 5 year warrenty,  
as low as \$157.00 each.  
Call Ed at 327-8558 Tucson

FOR SALE

18 H.P. Evin Outboard motor and tank.  
Runs great!!! Contact Chuck Blair at  
Cabin B-8 or call 992-8112 or 242-8505.  
Only #395.00

FOR SALE

1988 ATC Honda 250 SX, great shape  
plus extras. Excellent for "putting"  
around Cholla Bay. \$700.00 or best  
offer. Call John home - 832-6103  
work - 834-9307

FOR SALE

Trailer and Cabana. Buy both or  
one, \$7,500.00.  
Call 253-1846 or Puerto Penasco  
011-52-638-339-56

FOR SALE

Large butane Servel refrigerator  
new burner - excellent condition  
yellow. \$350.00  
Call (602) 943-9217 or cabin I-3  
on the Bay.

FOR SALE OR RENT:

BOATS, CABINS  
ETC!!!

Cabin with boat house. Or  
will rent garage space only.  
Call Wayne or Sue Kudis  
(602) 266-4930 or inquire  
at cabin #432.

FOR SALE

Cabin #436 - Trailer with additions on the front  
and back. Very good location, near the playground.  
Partially furnished, stove, refrigerator and some  
furniture. Clay fireplace with new approved chimney.  
Call Bryan Krough or Lumella Land at 805-238-2005  
evenings or 805-466-1399 days. \$9,000.00

FOR SALE

Cholla Bay house, partially  
furnished. Solar system.  
\$30,500. Contact owner at  
Lot 401.

FOR SALE

Lot #136 - 2 trailers - Porch -  
Large storeroom - Generator room -  
Partially furnished - will sleep  
10 people - Asking \$13,500.  
Call Jim - Tucson 741-0388 or  
Don - Benson 586-3860 or inquire  
next door Lot #467.

For Sale

Exceptional Views home and boat  
house, patios, breezeway, second  
story porch, 2 baths.  
Completely furnished with generator.  
Call: Phoenix 242-1131  
Evenings 997-2251

NEW STUCCO/BLOCK HOME FOR SALE

Brick trim, 2 Bdrm., 1 Bath, Large  
porch, hillside lot with beautiful  
view. Fully furnished.  
Inquire at cabin #474 or 266-4930

FOR SALE

HUGE 2 stall Boat House  
bath & shower part can  
be made into living quarters  
Inquire at cabin #432  
or call 602-266-4930

\*\*\* THE CHATTER ACKNOWLEDGES THE EXISTENCE OF LAW 101 AND THE ABOVE  
LISTINGS IN NO WAY ENCOURAGES DEFIANCE OF THIS LAW

FOR SALE "" THE WILDA E "" (not my wife !! )

18 ft. IMP OCEANIC V  
160 I/O MERCURISER  
SHORELINE TRAILOR  
2 RADIOS ( C.B. & MARINE )  
2 DEPTH FINDERS (1 SONAR "BLIP" & 1 LOWARNCE "CHART" )  
EQUIPPED FOR CHOLLA OR LAKES / FLARES, FENDERS,  
LIFE JACKETS, SWIM PLATFORM, ANCHORS & LINE.  
CALL - JIM WESTFALL 602-275-4062 PHOENIX



SORRY THAT WE DID NOT RECEIVE THE TUCSON  
CHAPTER NEWS IN TIME FOR THIS ISSUE.

## Y-KNOT PARTY SHOPPE

"YOUR WEDDING AND PARTY STORE"

- INVITATIONS • ANNOUNCEMENTS • NAPKINS • MATCHES
- THANK YOU NOTES ETC... (WIDE VARIETY - CONTEMPORARY & TRADITIONAL)
- FLOWERS • BALLOONS • FAVORS • DECORATIONS • ACCESSORIES
- BANNERS & STREAMERS • SPECIAL HOLIDAY ITEMS
- PROFESSIONAL CONSULTATION FOR WEDDINGS, RECEPTIONS & PARTIES

— EVERY DETAIL IS CAREFULLY CONSIDERED —  
FOR ALL YOUR WEDDING & PARTY NEEDS

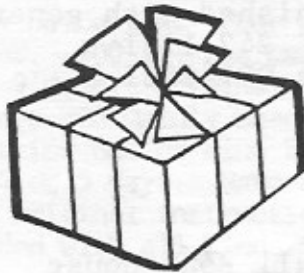
CALL

**967-4495**



1415 E. University #6 • TEMPE

HOURS  
MON - FRI  
10 TO 6  
SAT  
10 TO 4



Owned & Operated By: (602) 265-4398  
JERRY D. & MARLENE LAU  
CHRIS TEDROW, Service Technician

## MEL JARVIS MARINE

Division of J & M Marine

Johnson Dealer • Mercruiser • OMC Service  
Fiber Glass Repair • Trailer Repair

6600 West Buckeye Rd. Phoenix, Arizona 85043



## KirkWOOD Shutters, Ltd.

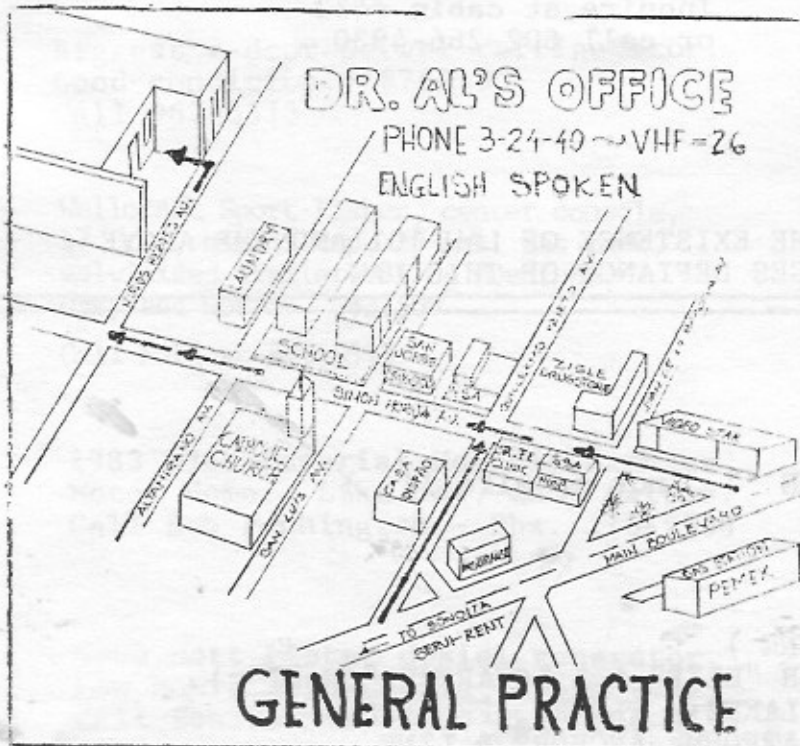
"The Ultimate of Distinction"

Walt & Helen Kirkwood

Phoenix  
274-9300

## DR. AL'S OFFICE

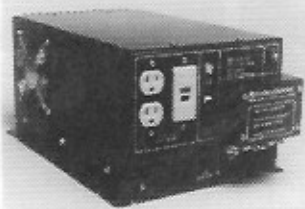
PHONE 3-24-40 ~ VHF-26  
ENGLISH SPOKEN



GENERAL PRACTICE



## IMPORTANT ANNOUNCEMENT FOR CHOLLA BAY RESIDENTS



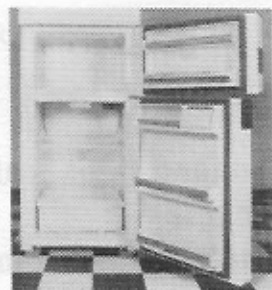
### Ultra-Efficient Home Inverter

*Finally, A special Inverter For  
The Remote Home Market*

- √ Available in 12volt Input, 2500 watt Output.
- √ Pricing comparable to industry standard
- √ 12 volt Input, 2000 watt Output.
- √ That's 25% more power for comparable pricing.
- √ 90+% Efficiency    √ High Surge Rating    √ Lowest Wattage,  
No Load Draw
- √ Remote Control Option

### DC Refrigerator/Freezer

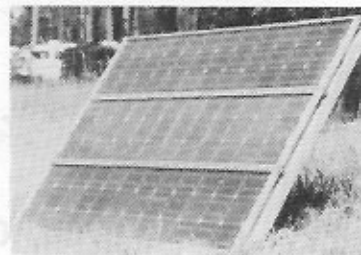
Costs 25% Less and Has  
More Standard Features  
Than The Competition!



- √ 15 cu. ft. with a Large Freezer.
- √ Most Efficient Unit Available!
- √ Includes: Separate Freezer Door,
- √ Interior Light, Crispers, Butter &
- √ Egg Shelves,
- √ Freezer Door Storage  
Compartment!

### 110Watt Power Module

Your Best \$ Per Watt  
Solar Electric Buy!



- √ 110 Watts at 12 volts
- √ Recycled Installed at Utility Power Plants
- √ Efficient Square Cell Technology
- √ Fully Framed and Easy-To-Use
- √ LOW COST
- √ 5 Year Warranty and 30 Day Money Back Guarantee.

**Photocomm, Inc.**  
4419 E. Broadway  
Tucson, AZ 85711  
(602) 327-8558  
(602) 795-7641 Fax



Send \$2 for our 66 page Full Color Catalog

CHRISTMAS PARTY - DECEMBER 15, 1990

GUS BROWN PLAZA - FISH FRY SHACK

Due to circumstances, the format for the Christmas Party has been changed. Shirley Petersen is the new Chairperson, but due to the late date, she needs alot of help.

Volunteers will be needed to pack and distribute the food boxes, pass out candy, hot chocolate and cookies.

If you can give any assistance, please see Shirley at Cabin # 80 in Cholla Bay, or show up at the Fry Shack, Saturday, December 15th, between 9:00 and 10:00 a.m.



**"BACK YARD  
ENTERTAINMENT  
SYSTEMS"**

- HORSE SHOE PITS
- LIGHTING SYSTEMS
- B-B-Q PITS
- PLANTER BOXES
- SPEAKER SYSTEMS
- POOL FENCES

• LANDSCAPING •  
DENNIS & KARL

# 345-6463

Help Us to Help Others.



**St. Vincent Center of Assistance  
is now open  
Mondays, Wednesdays, and Fridays  
10:00 AM to 2:00 PM  
to help the poor  
in Rocky Point.**

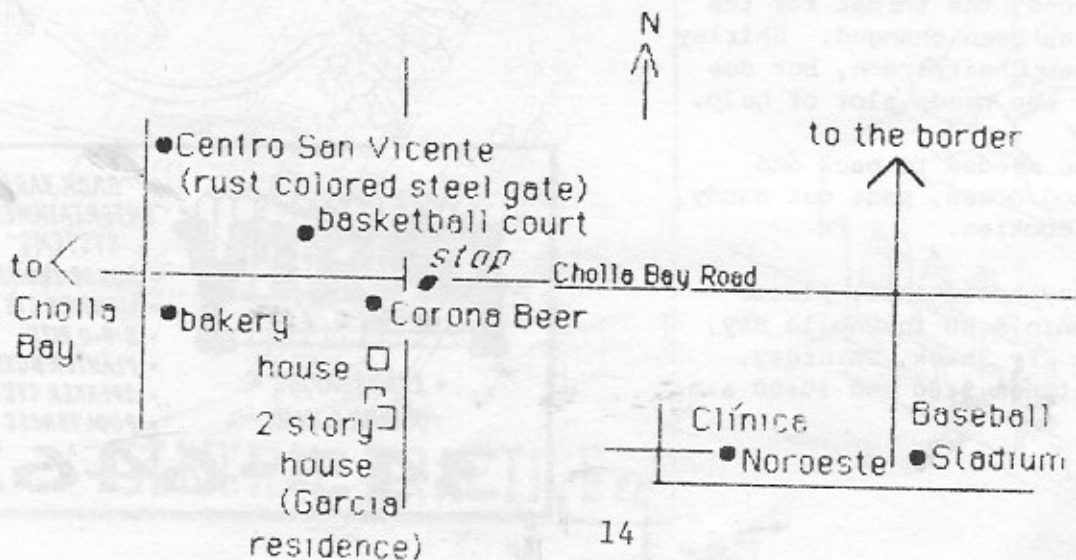
**Desperately needed are  
clothing, medical supplies and food.**

- Children's clothes and shoes - all sizes
- Sheets and Blankets
- All types of medical supplies and equipment
- Non-perishable foods

beans, rice, grains, pasta, powdered milk, canned goods, flour, ...

Drop off points:

- Noroeste Clinic of Dr. José García  
across from baseball stadium entering Rocky Point
- Residence of Dr. García  
second house (2 story) south of Corona Beer on Cholla Bay Road
- St. Vincent Center of Assistance  
On Cholla Bay Road turn right across from La Poblanita Bakery
- Irineo Residence in Miramar





## Mexican Insurance Available By Telephone

### 24 - Hours Per Day

### INTER-CARD

### The International Card

A unique program that provides the same approved, authorized policy with a new convenience - You can activate your insurance by telephone anytime, day or night!!!

All of our policies are written with the OFFICIAL rates required by the Mexico Insurance Commission and are OFFICIALLY approved by the government regulators. Most claims are paid by M.W. Douglas in U.S. currency.

M.W. DOUGLAS AGENCY HAS OVER 30 YEARS' EXPERIENCE IN PROVIDING ALL TYPES OF MEXICAN INSURANCE, FROM AUTO TO AVIATION. WE REPRESENT ONE OF MEXICO'S MOST PROFESSIONAL AND RELIABLE INSURANCE COMPANIES.

INTERESTED??? FOR FURTHER DETAILS, PLEASE CONTACT:

**M.W. DOUGLAS AGENCY, INC.**  
**DBA: MEXICO INSURANCE SERVICE**

**(602) 274-1100**

Monday - Friday 9:00 a.m. to 5:00 p.m.



- REELS REPAIRED
- CUSTOM FISHING RODS
- SPECIALTY PENN REELS

#### COURT'S CUSTOM TACKLE

1022 LARKSPUR LANE  
TEMPE, ARIZONA 85281

HERMAN E. COURT

(602) 949-9447



#### ROJO'S

HOME OF CHOLLA BAY DIVERS

WINDSURFER RENTALS  
FISHING CHARTERS

AIR FILLS  
SCUBA RENTALS

FOR INFORMATION OR RESERVATIONS

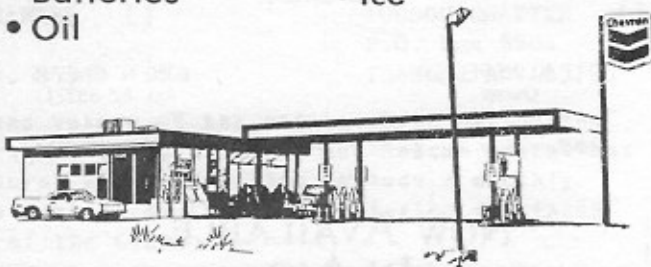
tel. 011-52-638-3-39-56

## IN AJO

## SAM'S CHEVRON

On Highway, Center Of Town

- Mechanic
- Tires
- Batteries
- Oil
- Clean Restrooms
- Diesel Fuel
- Ice



### ALL MAJOR CREDIT CARDS ACCEPTED

Cash or Credit Same Low Price

Member

Lots of Parking

# CHOLLA BAY HOMEOWNERS AND MEMBERS OF THE CHOLLA BAY SPORTSMENS CLUB

Due to the rumors and suppositions which have been circulating since the first of August, we feel it necessary to clarify certain points. The company's ownership of the land has never been in question. The only thing that has been prohibited is further development until the bank trust is established.

Urban Development Law 101 for the state of Sonora has recently come into effect. Since Cholla Bay does not fulfill all the requirements, it is classified as an irregular developemnt, not an illegal one.

As you know from our letters to you, for several years it has been the company's objective to establish a bank trust. Now with the government's interest and coordination with the company, this should soon be possible.

The Federal zone survey has been approved and ratified on two separate occasions. The markers will remain where Sedue said they should be. Those are partially or totally on company property must be current to qualify for the bank trust. Those on Federal zone will also have to negotiate for the property adjacent to Federal zone with the Commission in order to qualify for a bank trust and concession of Federal zone.

Obligations pursuant to the use of your lot have not changed. In the mechanics of the bank trust, the company will sell you the land and the bank will hold the title in trust for you.

If you require additonal information, call: 011-52-638-3-4373  
or Reyel Taylor at  
011-52-638-3-34-59

Thank You,  
The Management of Cia.  
Impulsora Deportiva de la Cholla, S.A.

387-6907 24 Hour Towing

387-6962 Parts & Service

## Del Sur Enterprises

Automotive & RV Parts  
Full Service

C.D. KLINEFELTER  
Owner

2050 N. Hwy. 85  
Ajo, AZ 85321

Napa

U-Haul

RV Park

**NOW AVAILABLE  
IN AJO**

**R.V., BOAT & TRAILER  
STORAGE  
\$1.00 A DAY**

DEL SUR ENTERPRISES

2050 North Highway 85 Ajo, Arizona 85321  
387-6907 24 hours or 387-6962

## WANTED

An enthusiastist person who would be willing to give up a little of their time for the opportunity to help out as editor of the Cholla Chatter. We would like to see some new faces with fresh ideas. Anyone interested please contact Sheila Chamberlain at (602) 275-1405.

## REWARD

The feeling of being involved in the club and with the members.



# AJO Dairy Queen

PHONE 387-7407  
North of Town on Highway

CHICKEN FILLET SANDWICH

HAMBURGERS

FISH FILLET SANDWICH

FRIES

ONION RINGS

CORN DOGS

BURRITOS

(Member)



WE TREAT YOU RIGHT™



THOMAS K. KNAUB, CCIM, SIOR

ILIFF, THORN & COMPANY  
COMMERCIAL REAL ESTATE  
3636 NORTH CENTRAL AVENUE, SUITE 600  
PHOENIX, ARIZONA 85012  
602/222-5000  
FAX: 602/230-2216



CERTIFIED COMMERCIAL INVESTMENT MEMBER



Individual Membership  
SOCIETY OF INDUSTRIAL AND OFFICE REALTORS®

**Restaurant**  
**La Curva**  
Mexican-USA Food



BLVD. KING  
PTA. PENASCO  
SON.  
Tel. 3-34-70

BAR SERVICE  
Jaime Isaias y Jose Cuevas

BREAKFAST LUNCH DINNER

## ATTENTION

### PHOENIX CHAPTER

Due to the length of our program last month our white elephant sale will be held at our December meeting. Your donations will be auctioned off by the famous auctioneer, Lew Frazier. Proceeds will go for the Christmas Party.

### TAKE THIS OPPORTUNITY TO INVITE A FRIEND TO JOIN THE CHOLLA BAY SPORTSMEN'S CLUB

THIS APPLICATION MAY BE TURNED IN AT THE RADIO SHACK OR MAILED TO:

PHOENIX CHAPTER   
P.O. Box 7171  
Phoenix, Az. 85011

CHOLLA BAY CHAPTER   
P.O. Box 267  
Lukeville, Az. 85341

TUCSON CHAPTER   
P.O. Box 5904  
Tucson, Az. 85703

Your dues completely support all maintenance and upkeep of the radios, both Marine and Citizen Band, pay the salary of our Radio Operator, support Search and Rescue operations and promote the goodwill of our Mexican Neighbors. These dues also include a monthly copy of the "CHOLLA CHATTER", the official publication of the Club, offering continued information about the area and the activities of the Club.

NAME \_\_\_\_\_ SPOUSE \_\_\_\_\_ PHONE \_\_\_\_\_

ADDRESS \_\_\_\_\_ CITY, STATE \_\_\_\_\_ ZIP \_\_\_\_\_

NAME & AGES OF CHILDREN UNDER 18 \_\_\_\_\_

PLEASE CHECK BOX FOR CHAPTER AFFILIATION.

DUES: FAMILY \$25.00

SINGLE \$20.00



FALL PICNIC

NOVEMBER 3, 1990

ARTICLE FOR CHATTER

November started out with inclement weather and we, as chairmen of the picnic, just knew there was going to be a repeat of the past rainy Saturday CBSC picnic days.

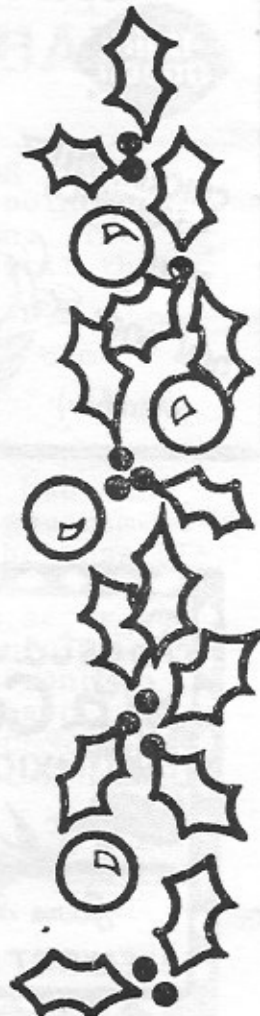
Well, as luck would have it, the day turned out to be absolutely beautiful. The temperature was perfect for a Fall Picnic. Everyone had such a good time last year, we chose the same site for this year's picnic.

Being the second year for us to be the chairpersons, we simply repeated what was done last year. Everything went well and, of course, we learned from our mistakes last year and this year's picnic was much easier for us.

Those that attended had a fun day and the kids enjoyed the games. Many of the adults tried their hand at Jenga and, above all, the steady hand prevailed. The visiting and cussing and discussing the recent events in the Bay were the topic of many conversations.

THANK YOU ALL FOR COMING AND WE COULDN'T HAVE DONE IT WITHOUT YOU. THANKS ESPECIALLY TO THE FRAZIER'S AND MARTIN'S.

John & Connie Norsworthy  
Chairpersons - 1990



**SETH SMITH PROPELLERS**  
 1930 E. Indian School Road  
 Phoenix, Arizona 85016  
 Phone: 234-0929



**Propeller Specialists Since 1958**

FACTORY AUTHORIZED SERVICE STATION FOR:  
 MICHIGAN WHEEL - QUICKSILVER/MERCURY

**REPAIR - SALES  
 ALL MAKES**





RESTAURANT TROPICAL

**Clive Jordan**

3843 E. Thomas Rd.  
 Phoenix, AZ 85018  
 (602) 273-6077

# TRACKER SEACRAFT™ 20CC



**COMPARE STANDARD EQUIPMENT...  
You Always Get More With TRACKER.**

#### STANDARD FEATURES:

- 150 H.P. Tracker engine with VRO
- Fully instrumented center console
- Smoked windshield
- Console side lights
- Dual-axle trailer
- Rod holders
- VHF radio and antenna
- Tracker 12 volt battery and box
- Built-in 70-gallon fuel tank

#### SPECIFICATIONS:

- Centerline .....20'4"
- Beam .....7'6"
- Fuel capacity .....70 gal.
- Maximum H.P. ....150
- Draft, hull .....12"
- Weight capacity .....1550 lbs.
- Weight boat only .....2100 lbs.
- Degree deadrise .....16°



Complete Package

# \$16,995

Plus Freight and Rigging  
Prices and specifications subject to change without notice.

**TRACKER**  
marine.

**12 YEAR  
BANK FINANCING**

**MORE MONEY  
FOR YOUR TRADE-IN**

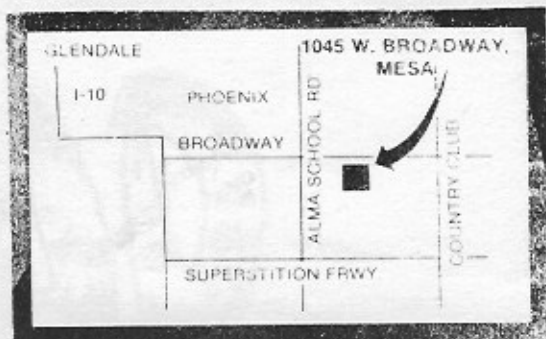
## RANDALL MARINE

MESA,  
ARIZONA

602  
964-1583

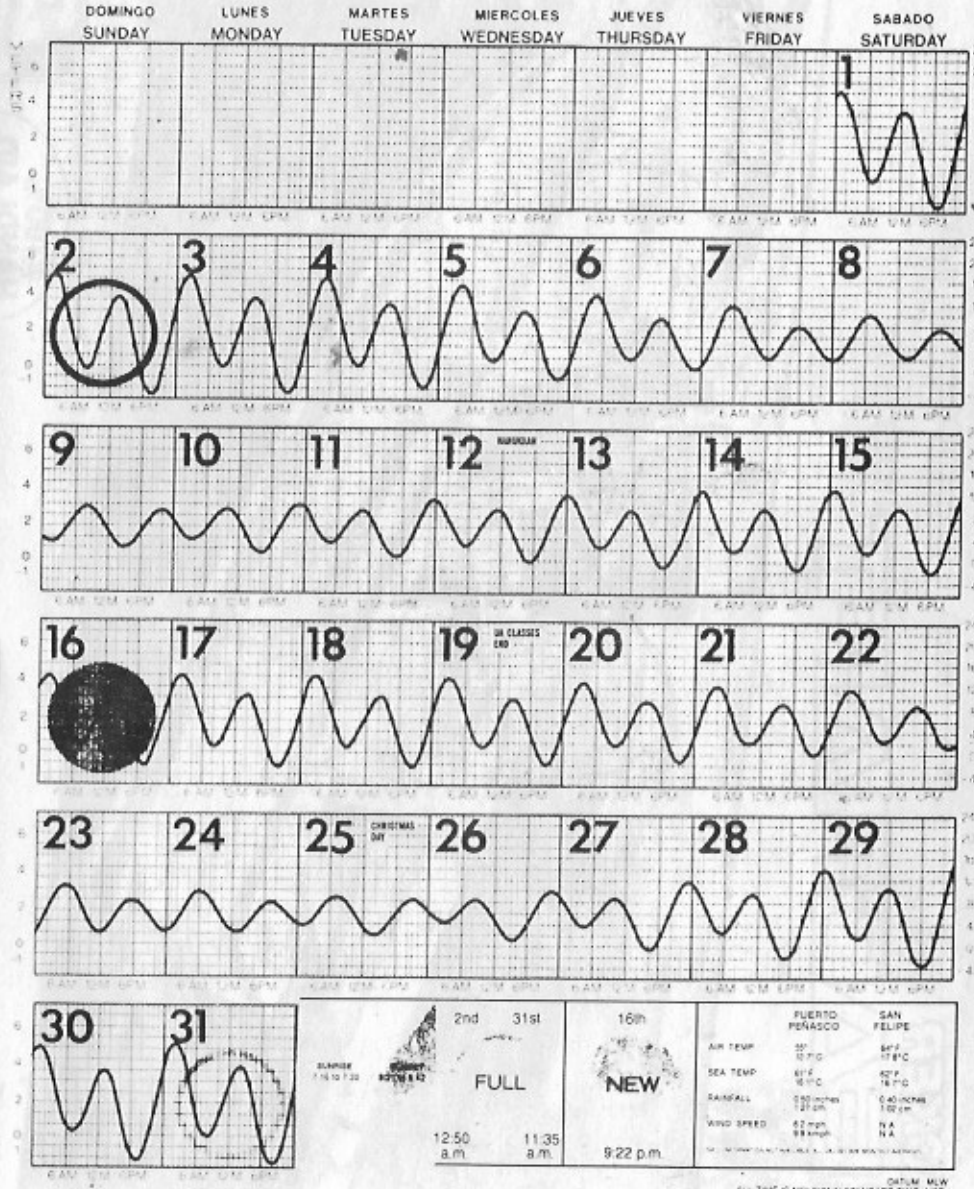
**• ARIZONA'S LARGEST SELECTION 19  
WE STOCK OFF-SHORE FISHING BOATS**

**LIMITED  
OFFER -  
BUY NOW!**





# DICIEMBRE / DECEMBER 1990



CHOLLA BAY SPORTSMEN'S CLUB, INC.  
 4546 E. Campbell Ave. Phoenix, Arizona 85018

Bulk Rate  
 U.S. Postage  
 PAID  
 Permit No. 138  
 Scottsdale, Az.

DTUM MW  
 ALL TIME IS MOUNTAIN STANDARD TIME (MST)