

OFFICIAL PUBLICATION OF THE CHOLLA BAY SPORTSMENS CLUB

VOLUME 23, Number 6

JUNE 1980



CHOLLA CHATTER
Official Publication
CHOLLA BAY SPORTSMEN'S CLUB, INC.

COUNCIL
Chairman - - - - Paul Schoonover
Vice Chairman - - Alan Peterson
Secretary - - - - Mary Brown
Treasurer - - - - Dave Conner
Members - - - - Dave Conner, Jack Ebert, Chuck Woodward, Mary Parker, Paul Schoonover, Jim Westfall, Von Gottbrecht, Les Ormsby, Don Barber, Ann Faulkenberry, Tom Boyle, Pete Peterson, Ken Kasten.
Audit Committee - Paul Vanover & Jim Westfall

PHOENIX ALTERNATES
Shirley Hemphill

TUCSON ALTERNATES
Chuck Dernberger, Gene Reid & Pete Scott

PHOENIX CHAPTER
P.O. Box 7171, Phoenix, AZ 85011
President - - - - Chuck Woodward
Vice President - Shirley Hemphill
Secretary - - - - Von Gottbrecht
Treasurer - - - - Les Ormsby
Directors - - Don Barber, Mary Parker, Paul Schoonover, Jim Westfall, Dave Conner, Jack Ebert
Audit Committee - Paul Vanover & Earl Morris

TUCSON CHAPTER
P.O. Box 5904, Tucson, AZ 85703
President - - - - Tom Boyle
Vice President - Ken Kasten
Secretary - - - - Peggy Drake
Treasurer - - - - Irene Drake
Directors - - Gene Reid, Alan Peterson, Dennis Hohlenkamp, Dr. Del Heim, Bill Drake, Ann Faulkenberry
Audit Committee - Mary Brown & Sarah Hohlenkamp

CB RADIO
Monitor - - - - Channel 3
Conversation - Channels 11 & 22

VHF MARINE
Channel 16 - - Safety and Call
Channel 20 - - Boat to Boat

SEARCH AND RESCUE
Don Barber, Chairman
13211 N. 19th Street
Phoenix, AZ 85022
971-8015
Vice-Chairmen - Pete Scott & Chuck Woodward

SICK BAY CHAIRMEN
Phoenix: Verlene Barber
13211 N. 19th Street
Phoenix, AZ 85022
971-8015
Tucson: Ann Faulkenberry
6418 E. Eli Drive
Tucson, AZ 85710
747-9641

MEMBERSHIP CHAIRMEN
Phoenix: Betty Woodward
1610 W. Lamar Rd.
Phoenix, AZ 85015
249-1971
Tucson: Shirley Peterson
1746 E. Copper
Tucson, AZ 85710
327-2570

COUNCIL CHAIRMAN
Paul Schoonover
21412 N. 11th Avenue
Phoenix, AZ 85027
869-0804 1-488-3981

CHOLLA CHATTER
Editor - - - Betty Woodward
1610 W. Lamar Rd.
Phoenix, AZ 85015
249-1971
Advertising - Frank Abram
2519 W. Windrose
Phoenix, AZ 85029
997-2444
Publisher - - Ken Kasten

SHIP TO SHORE
AM Marine Radio
2182 - - - Safety and Calling
2555 - - - Boat to Shore
2638 - - - Boat to Boat



June 4 - PARAMEDICS UNLIMITED
Emergency Training Program - Phoenix

INTERNATIONAL SPORTFISHING TOURNAMENT
Kino Bay, Sonora, Mexico
JULY 4, 5 and 6, 1980

GRAND INTERNATIONAL TOURNAMENT
JULY 10, 11, 12 & 13
Guaymas, Sonora, Mexico

DON'T MISS YOUR MEETINGS!
TUCSON

Wednesday JUNE 4th 7:30 p.m.

MOOSE LODGE
2180 North Wilmont Road

PHOENIX

TUESDAY JUNE 10th 7:30 p.m.

HUNAN
RESTAURANT

1575 E. Camelback Rd. (At 16th St.)

NOTE THIS
CHANGE

25th ANNUAL FISHING DERBY

Thanks to Derby Chairman, Chuck Hoyt, his Tucson co-chairman, Ann Faulkenberry and Fish Fry Chairman, Gene Reid, with their many, many willing helpers, we have had a Super Derby indeed!

Getting involved in the activities is the best way to enjoy them, ask any of the above.

A Derby isn't a Derby without you fishermen too. The July CHATTER will be the Derby report issue. Get your pictures in early, we want to see the fish that won you your trophy.

If any of you have corrections and/or additions to be added to the I.D. BOOKLET. Call or send them to the Editor. We will print an update from time to time in order that members can make the changes on their copies. Blank pages have been provided for this purpose.

Please note the following:

Name	Boat	Cabin	CB
GREEN, Homer	Duit Tuit	-	Duit Tuit
FARRAH, Tom	Tom Cat	310	Tom Cat
PARKER, Lou & Mary	Mary Lou		Mary Lou

NAME: _____

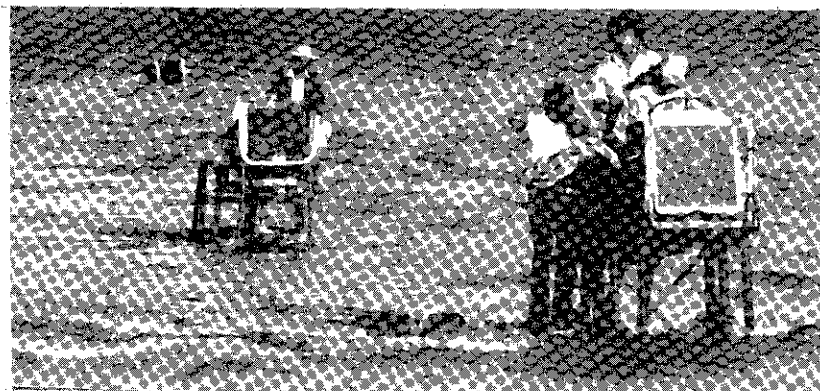
CABIN # _____ (optional)

BOAT NAME: _____

CB HANDLE: _____


QUESTION - - -

What can happen on a very low tide if a launcher has to go a little too far out to retrieve your boat?



George can tell you and it's expensive!

Home Address
Constitución y Simón Muñe
Phone 3-21-98 y 3-22-88



ALEJANDRO PORTUGAL MARTINEZ
Insurance Agent.

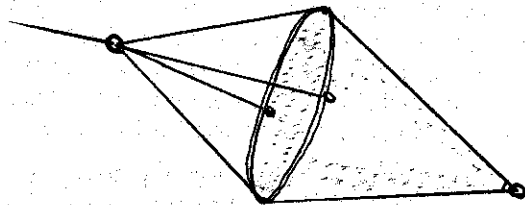
PROPERTY, FIRE, .AUTO, LIABILITY.

SEGUROS BANCOMER, S.A.
Venustiano Carranza No. 42- 6o. Piso
México 1, D.F.

Phone 3-22-83 Business
Puerto Pañasco, Sonora

SEARCH ↗ RESCUE

THE SEA ANCHOR



In extreme cases, a sea anchor is occasionally used. Normally, this will consist of a canvas cone-shaped bag having an iron hoop to keep it open at the mouth. To this hoop, a bridle and a heavy line is attached which is paid out from the bow and made fast to the forward bitt. A trip line can be attached to a ring at the end of the cone. This is used to spill the bag and make it easier to haul the anchor back aboard. In use, the theory of the anchor is not to go to the bottom and hold, but merely to present a drag or resistance which will keep the boat's head up within a few points of the wind as she drifts with the wind. A sea anchor, sometimes called a drogue, will usually float a short distance beneath the water's surface.

There are also available on the market, sea anchors made up of a series of plastic floats of a more modern design. These fold compactly for storage and are said to be more effective in holding the bow into the sea.

Whatever style of sea anchor is carried on your boat, make sure that it is of sufficient size to be effective. A small one may be easier to stow, but there's no point to having it if it won't do the job.

In the absence of a regular sea anchor, any form of drag rigged from spars, planks and canvas or other material at hand would be worth trying. What ever you use, it should float just below the surface and effectively keep the boat from lying in the trough (galvanized bucket, pair of jeans with legs knotted, etc.)

Make sure this equipment - sea anchors, trip lines, lead lines, etc. - is in good condition and not rotten from long periods of storage. Cotton and manila emergency equipment should be discarded in favor of synthetics.

Sea anchors can be used only if there is sufficient sea room as there is naturally a steady drift with the wind and tides. It is imperative that a constant watch be maintained to guard against running aground. Engines may have to be used to ease the strain during the worst of the blow. A long anchor line will give the anchor it's best chance to hold and you will not be as likely to take water over the bow. Attaching a bouy can also help to keep it riding near the surface.





TRY IT... YOU'LL LIKE IT!

CHOLLA BAY CHICKEN

- 1 cut-up Fryer
- 2 cut-up medium Onions
- 2 cut-up fresh Green Chilis
- 1 medium can Tomatoe Sauce
- 1 or 2 cans Salsa
- Dried parsley
- Sweet basil
- Oregano
- 1 can cut-up Mushrooms

Boil fryer in water with 1 tablespoon salt added. (Don't overcook it!)

In sauce pan, put all other ingredients. Let simmer until half cooked (when onions are done). Add sweet basil and parsley, then oregano to taste. Add mushrooms. Simmer for one hour or until you can't stand it any longer. Pour broth off the chicken and save it. Place chicken in deep bowl or pan and pour sauce over it and enjoy!

The broth you saved will make wonderful chicken soup with addition of rice, vermicelli or spaghetti.

Matt Cubitto



NEAR COMPLETION - Lot 17, Block construction. Large all-purpose room, 2 bedrooms, 1 bath. Water tank

NORMA RICHARDSON Home 967-3437
894-9217

SEA LINES

by Bill Valentine

A saltwater fisherman is exposed to quite a variety of thrills when he sets forth on to the wild blue yonder. The prime time of the year for one of the most exciting thrills available to any type fisherman, especially a Cholla Bayer, is during the summer months from June thru October. This is the time of year when the greatest gladiator of the upper Gulf makes his appearance in the offshore blue waters off Rocky Point and Cholla Bay. I'm speaking of the Pacific Sailfish. This supperfish is available to any Cholla angler who has the inclination to tangle with one of the finest light tackle antagonists that swims the warm blue waters of the world. I say light tackle, because these long slim beauties (as a rule) spend a lot of time in the air upon realizing that they're in trouble. This spectacular behavior endears them to those of us who delight in light lines & whippy rods. Unlike a pinto, grouper or pargo, these babies spend most of their fighting time within 30 feet of the surface, allowing you to use comparatively light (20-30 lb. test) line. We've nailed several sailfish on our center flat line while trolling a small white bomber feather jig (actually nylon "hair") tied to 20 lb. XL Trilene loaded on a Penn Squidder reel. This, my friends, is fun fishing at it's best.

Before I finally retired my first blue-water fishing cruiser, the 16' moulded plywood outboard, the AFRIKAN QUEEN, we had successfully boated 34 --- not bragging, just making the point that you don't need a cabin cruiser to go after these spike-nosed rascals.

There are two methods of conning these beauts -- Trolling skipbaits (mullet, fly-fish or bonefish) from outriggers or, speed trolling lures on flatlines. When using skipbait from outriggers, you troll just fast enough to keep your baits planeing along the surface (4 to 6 MPH). Theoretically, when a fish strikes, knocking your line free of the outrigger pins, you should slow your boat and allow the lucky angler on the rod to freespool line to the fish for a solid 10 count. Then, at the end of this 10 count, if the fish is still running with the bait, comes the moment of truth. The angler flips the reel into gear and the skipper pours the coal to the boat to try and help the fisherman set the hook with the forward motion of the boat. Man, feeling that rod try to part company with you as a mad sail leaps across the surface as he rips line off a screaming reel is the ultimate thrill. Trolling lures is a slightly different technique. It's a lot easier to troll lures via direct flatlines, as the water resistance of the fish fooler (Konahead - Psychobead, etc.) plus the speed (8 to 12 MPH) of the boat, makes it a trifle awkward to keep your line secure in the outrigger clips. Stagger the lures at different lengths behind the boat so that as you make turns, you don't braid the lines in a gawdawfull mess. Have your reel drag set in the normal 'striking' position and make sure the hooks are honed razor sharp. When a sailfish hits a falsie as your boat is zipping along about 10 MPH, he should get hooked -- use the boat to help drive the hook home -- driving at least 75 to 100 yards off the reel before lifting your rod from the rod holder. If the fish is not hooked, or drops the lure, immediately freespool it back to him. Sometimes, he'll think he killed the dang thing on his strike and come back to grab it as it flut-

ters down. It's a good idea to use 30 lb. (as opposed to 20# test) on lures, but the 20# on bait.

It's criminal to kill these beautiful fish, unless he's record sized, you want him for mounting, he's your 1st caught & you want a picture or you're competing in a contest or tournament. They taste absolutely lousy and believe me, it's an absolute joy to see one of these magnificent fish released and slowly swim away after a good hard fight.

Character, like fine old lace,
Weaves a pattern on each face.
What we do, and what we think
Leaves its imprint, just like ink.

If we fill our lives with hate
Ugliness will be our fate.
If we give out love and cheer,
Lines of beauty will appear.

Author unknown

BIRTHDAY GREETINGS TO:

W. O. (Pop) SOUTH
P.O. Box 765
Safety Harbor, FLA. 33572

Mr. South writes that he had his 96th birthday on May 31st. This is the first year in the last 22 that he has not wintered in Cholla. He is a past member of the Club and asked that his address be made available to his friends as he would like to hear from them. I'm sure he has many.

PHOENIX CHAPTER GENERAL MEETING

Marie MacGill

The heavy down pour we had the evening of May 14th, didn't seem to keep many away from the meeting as a lot of people came. In fact some who hadn't been there for quite some time attended and if so many members hadn't been ill, there would have been even more.

Verlene Barber, Sick Bay, reported a long list who were ill this past month. We all send "Get Well Wishes" to EMMA LOU KEMP, JAMES BERRY, JOE BLUNK, STAN BROWN, MARION BARLOW, HILDA ERKERT, H. C. COPE, MARY HALL, BILL LEE and JERRY NUNN. We hope all of you are on your way to a speedy recovery.

Phyllis Abram was acting secretary while Von Gottbreht was enjoying the Bay. Thanks Phyllis.

Don Barber, Search & Rescue, has brought our attention to the dangerous practice by some children and adults, of swimming and water skiing in the area of the boat landing. These activities are very dangerous in that area, so please don't do it.

The next meeting will be on Tuesday, June 10th at 7:30 PM, same location. The room will not be available on the regular Wed. night for June.

Connors, Eberts and Hemphills have volunteered as Dance Committee. Shirley Hemphill reports that the dance will be held in August, time and place to be announced.

Don Milligan, new club member, donated a large framed color picture of Cholla Bay, for the Christmas raffle. He also has them for sale. It is a beautiful aerial photograph. If you didn't buy your tickets at

the May meeting, you can still do it at the June meeting. Who knows, you might be the winner.

Door prizes were won by Lou Parker, Jim Westfall (not again), and Wimpy Jaskowiak.

Sal Marotta has small plastic bottles called "Vial of Life" that he has donated to the club. Please see Jim or Elnora Westfall about them. Also check with Betty Munro at the Radio shack. They are free of charge. The bottle will contain your medical history, etc. and when you have completed the enclosed data, it could save your life.

Until next time, have a cool summer and lots of good fishing!

NOTICE

In the event of medical emergencies in the Rocky Point area, AIR EVAC of Phoenix can fly in with a fixed wing aircraft. (This is out of range for the copter.) They advise that they are able to take off, with necessary clearances, within 30 min. to an hour from the time they receive their call and, weather permitting, can be in Rocky Point an hour and 15 min. after take-off. They are equipped to send qualified medical personnel as needed.

The service is not free and the urgency of the situation would certainly determine the need to incur the expense.

NAVIGATOR'S NOTEBOOK

by
Paul Schoonover



"CORRECTING COURSE DUE TO CURRENT"

In previous articles, we have covered finding our way by compass. Steering by a good compass is a dependable way to travel from place to place.

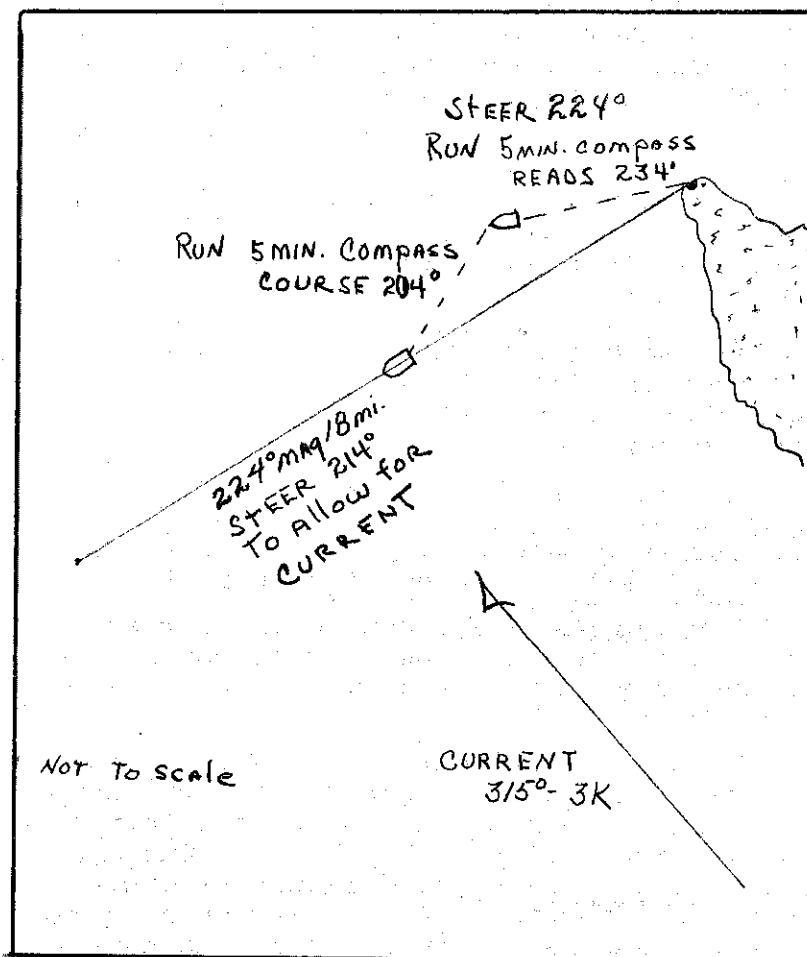
We have not mentioned other forces effecting the course traveled. The main force we have to contend with, cruising out of Cholla Bay is tidal current. On spring tide (near new or full moon) you may encounter currents in the upper gulf of three to four knots. Around Cholla these currents are usually in a southeast or northwest direction.

If you are going to 18 mile reef (224°) with a flood (incoming) tide, you will probably be 3 to 4 miles to far north unless you make allowance for current.

You can plot your course and current on the chart and find the correct course to steer or you may change your course by observation.

To observe the current effect on your course, run past Pelican Point for a couple of miles (5 minutes at 24 knots), then look back. You will probably have to turn your boat to put the Point directly astern. Read your compass, if you were on a course of 224° and had to turn to 234° to have the

point astern (a difference of 10°), then turn back to 204° (a difference of 20°) for 5 minutes to put you back on course. Then steer 214° to allow for current and make a good 224°.



HAPPENINGS AT PELICAN POINT

Marie MacGill

Let's all hope that fishing is better in June than it has been so far in May. If it isn't we may have to start buying our fish and just settle for the beautiful weather at Cholla. Lots of people have been doing just that. Rich Hanson was there while we were, also Hal & Evelyn McKenzie, Gene and Dee Miller, Elaine and Tom Blackman, Al and Linda Owens and Linda's parents, the Don Martins.

We had a nice visit with Ed Perlmutter ife, Marty, was in Phoenix with their little grand-son Rocky, who was recovering from surgery. Butch (Firecracker) Heldt and Ethel were also in Phoenix for a few days.

I'll have a few things to tell about Clarence and Bea Allums' trip to Hawaii when they return. The 17th of May was their departure date.

Bob and Velma Fulton celebrated their 52nd wedding anniversary on May 6th. May you sweethearts have many, many more.

Hope to see you at the Bay.
Please enjoy.



**CLUB DEPORTIVO
"BAHIA KINO"**

I have a good supply of official application forms available for the Kino Derby, so rather than print the details here, call and I would be happy to send you the information.

As for the Guaymas Tournament -

For Reservations write:

P. O. Box No. 313
Guaymas, Sonora, MEXICO

I hope to have more on this when it gets closer.

Editor

Pat Rudolph of Paramedics Unlimited will will have our 2nd session of instruction on June 4th, HUNAN RESTAURANT from 6-10 PM.

There was a terrific turnout for the 1st session and Pat has indicated that he wants to provide an extra two hours at a later date to update and review.

It is not necessary to have attended the 1st session in order to attend later ones.



THE MIGRANTS

Mary Fran Taylor

Spring and fall and after a Chabasco, there are many birds to be seen in Cholla Bay, passing through.

Having never been exposed to sea and water birds with my West Texas upbringing, I found Cholla Bay completely fascinating. What was I seeing? Bird watching became a full time hobby.

Oh, yes, I knew a gull and a pelican. But do you know the four varieties of gulls you may see in Cholla? I still make mistakes. I've yet to see some of the varieties of pelicans, except the Brown that we see everyday.

Then, too, from year to year our visiting birds vary. It is a constantly changing experience and challenge to see and recognize the migrants.

One of the usual migrants is the Western Grebe. He also is to be seen in numbers on the lakes of Arizona, up the Colorado River and on the West Coast - clear to Canada.

He is a swimming and diving bird with flat lobes on his toes. The legs are short and set back on the body, the tail is short and the wings are short. He is an erratic flyer. They sometimes taxi yards before becoming airborne.

Their most common identification is the long straight neck. Their coloring is black and white in both sexes. The neck is predominately white. His bill is long and pointed. He feeds on aquatic animals and for some reason unknown to scientists, he feeds on feathers.

The Grebe has the ability to adapt to water and air temperature changes. If it is cold, he swims along with his body almost submerged. When it is warm, he rides high in the water.

They nest in floating marsh vegetation and lay 2-9 eggs. Their courtship dance is quite elaborate and accompanied by wails and whistles.

Year before last, in the fall, I saw a flock of Grebes covering an area the size of a football field off the launching ramp. They traveled around Pelican Point and almost to Sandy Beach before flying on south. It was quite a sight, thousands of white necks sticking out of the water and it was very noisy with all their calls.

I'll cover more of the migrants in articles to follow.

HAIKU is a three line, 17 syllable poem of Japanese origin and is an expression of a brief poignant moment of insight or awareness of life around us. . .

A quiet sea shore
Rollers breaking on the beach
A fishing boat off shore.

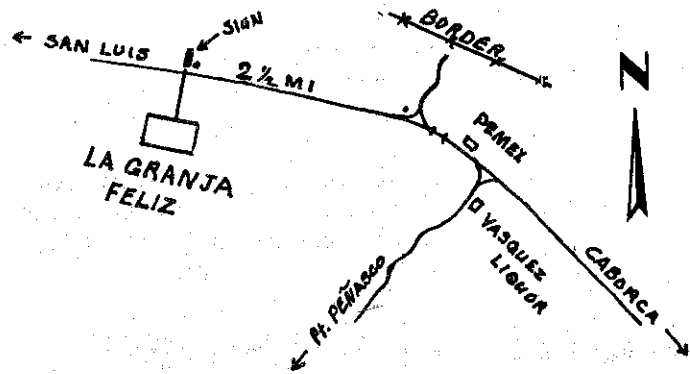


Family Missions, Inc.

The Sonoyta Orphanage has expressed great appreciation for the delivery by Phoenix Club members, of a large amount of toys and games donated by the Phoenix Police Department.

They can still use school supplies (paper and pencils), also usable towels for kitchen chores as well as for personal hygiene.

Here again is the map:



Through the combined efforts of Glen & Doris Davis, Wimpy & Jayne Jaskowiak and Lou & Mary Parker, the Orphanage will receive their new tables just as soon as the wind dies down long enough for painting. Jayne says they'll be bright sunny yellow. La Granja Feliz will surely be grateful to these generous people.

SHIPS STORE

CB HANDLE BOOKS now available-
At the Bay or Your
SHIPS STORE.

Updates will be printed from time to time in the Chatter in order that you can keep your copy up to date. Get your book now.

BOAT

PROPELLER SPECIALIST

All Makes Repaired - Repitched - Rehubbed - Cupped
We Are A Factory Franchised Repair Station
For Michigan and Mercury Propellers

SETH SMITH MARINE DISTRIBUTORS, INC.

1017 S. 23rd St. 273-1274 Phoenix, Arizona

INSURANCE • MOTEL • ICE
GENERAL STORE • CAFE

GRINGO PASS

Highway 85 South of Ajo
Lukeville, Arizona



Phone
Lukeville
No 2

TAX FREE LIQUOR

Evinrude Sales & Service
Pima County's ONLY Evinrude Dealer
ONLY Factory Trained Mechanics
Work on Your Motor

DISTRIBUTORS FOR

TERRY IMPERIAL
VALCO STEURY
HAMMOND MIRRO

BEST BOAT SALES
2854 N. Stone, Tucson, Ariz
732-2816

ED TAPPAN - Club Member

BOAT NAMES by OLD TIMER,
Homer Smith

Historically, watercraft names have been in the feminine gender. No doubt, this is the reason why so many men name their boats after a wife or daughter. Some name them for a brand, trade or a profession: JX BAR, PLUMERO or RECOVERY ROOM.

My first boat, a 15 foot hydroplane, which I raced on the Wabash and Ohio Rivers, was SNEEZE TWICE. This was very appropriate inasmuch as it's 3 brass-cylinder, two-cycle engine, had to be cranked! It was the forerunner of the 151 C.I. class in the MVPB Ass'n. (later known as the American Power Boat Association).

In about 1925, Eddie Meyer trailered his LITTLE STAR all the way from California to Tampa, for the National Championships, where he won first and set a record. It was a souped-up Star Automobile engine of 151 cu. inches. That ended the dominance of Pierce-Budd in that class. Nearly 30 years later Eddie was to be in Seattle with his UN CIEN, a hydro in which he joined the "100 Mile-an-Hour Club".

Between the wars, the Unlimited Hydro Class was dominated by Gar Wood's MISS AMERICA I, II, III & IV. After WW II, Stan Sayers brought the Gold Cup to Seattle with his SLO-MO-SHUN. Other Gold Cup boats were Horace Dodge's MY SWEETIE, named for his mother, and Guy Lombardo's TEMPO.

WW I boats I sailed on were; SC 198, which the crew appropriately named the SPIN-DRIFT, as it had no official name; the USS BEALE, named for a naval officer; and the armored four-stacker from which we disgorged a battallion of marines at Murmansk

and spent 6 months, in midwinter, bombarding the Bolshevik's supply lines. The crew dubbed her the MERRY LAND, a misnomer if there ever was one!

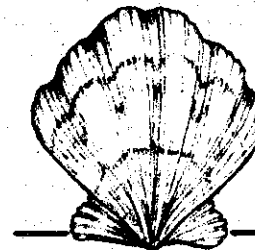
After WW II, my boats were the SACRED CALF I, II, III & IV as my Cave Creek Ranch was breeding Brahman cattle, sacred to the Hindus.

I called my 34 foot motorsailer BARCO de CABOTAJE, the equivalent of "Coaster" in English. This boat was built by Montijo in Rocky Point. Then my last boat was the OSO POLARIS (Northern Bear), which I kept in Cholla for 8 years. This name was inspired by my Alaskan homestead, a retirement project.

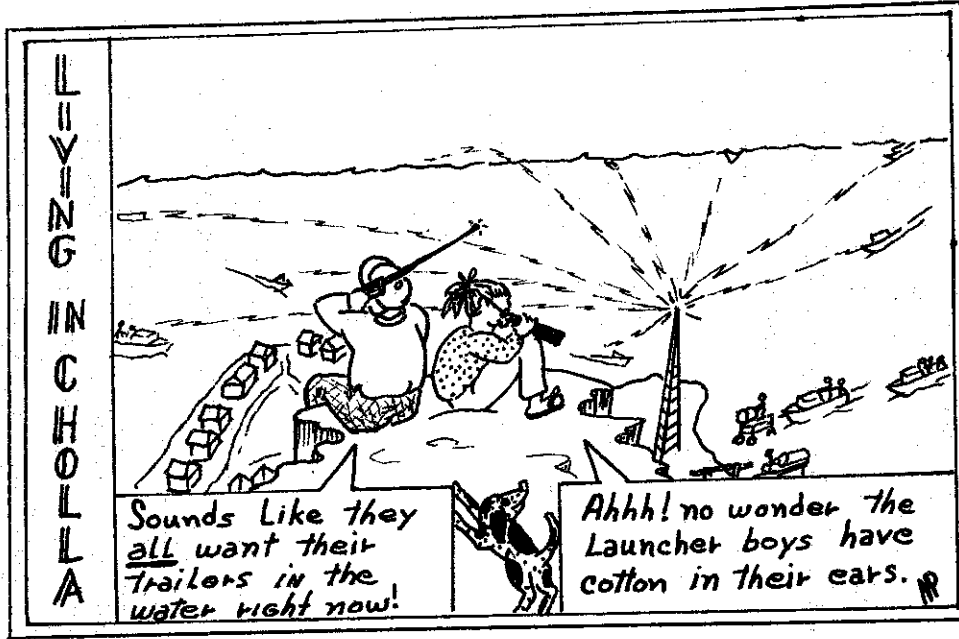
And so it goes, on and on - - -

Thanks Homer, for sharing some very interesting information with your fellow members.

Send yours to: J. W. WESTFALL
3623 E. Granada Rd.
Phoenix, AZ 85008



"The Maiden Voyage of the
21 JEWELS"
will be published at a
later date.



TAKE THIS OPPORTUNITY TO INVITE A FRIEND TO JOIN THE
Cholla Bay Sportsmen's Club

THIS APPLICATION MAY BE TURNED IN AT THE RADIO SHACK OR MAILED TO:

Phoenix Chapter
P.O. Box 7171
Phoenix, AZ 85011

OR

Tucson Chapter
P.O. Box 5904
Tucson, AZ 85703

Your dues completely support all maintenance and upkeep of the radios, both Marine and Citizen Band, pay the salary of our Radio Operator, support Search and Rescue operations and promote the goodwill of our Mexican neighbors. These dues also include a monthly copy of the "CHOLLA CHATTER", the official publication of the Club, offering continued information about the area and the activities of the Club.

Phoenix meetings: 7:30 PM
2nd Wed. of each month
HUNAN RESTAURANT
1575 E. Camelback Rd.

Tucson meetings: 7:30 PM
1st Wed. of each month
MOOSE LODGE
2180 N. Wilmont Rd.

NAME _____ SPOUSE _____ PHONE _____
ADDRESS _____ CITY, STATE & ZIP _____
NAMES & AGES OF CHILDREN UNDER 18. _____

DUES: Family \$25.00 Single \$20.00

IN MEMORY

Our condolences to the family and friends of John Fort who died May 7th. Mr. Fort was a longtime supporter of the Club.

YATES THE STORES
for
ALL OUTDOORS
Whatever You Need for
FISHING
3931 E. THOMAS ROAD 955-3360
4750 NORTH 16th STREET 277-5415
59th Ave - BETHANY 939-6531
Phoenix, Arizona

Mexican & U.S. Boat

Insurance Specialists



Nichols Insurance
Services
C-4260 N. Brown
Scottsdale, Az
947-4205

TUCSON CHAPTER MEETING
Gail Kasten

The May meeting of the Tucson Chapter of the Cholla Bay Sportsman Club was held on Wednesday the 7th. at 7:30pm. Because the meeting was set aside for the purpose of a discussion on the format there was no program planned.

Discussion was held with many opinions viewed. The final decision was that the members want to have a formal meeting with reports and anyother interesting happenings at the Bay reported at each meeting. We will also try to plan guest speakers and/or films at times, but this will not be our main interest.

Anne Faulkenberry had derby jackpot tickets and tee shirts available for anyone that wanted to purchase them.

Our thanks to the following for the donations for the raffle for the Christmas fund:
Joanie & Chuck Derenberger - peanut cactus
Sarah & Dennis Holenkamp - large flashlight
Anne & Terry Faulkenberry - Mexican doll
Would you believe the lucky winners of the prizes were members of the Foley family. They won all three. How about that!

Door prizes for the meeting were 3 sets of Derby jackpot tickets won by: Peggy Drake, Irene Drake, and Rose Humphreys (she also won the cactus but gave it back explaining she had some so would like to see someone else win it). Also given were 2 derby tee shirts won by: Betty Drake and Eileen Court-right. As you can see the Drake family did pretty well also.

Next meeting will be held on Wednesday, June 4th. Graduation night for many.
SEE YOU ALL THERE.

FOR SALE

HYDRO SWIFT boat - 20' - 155 Hp V-6 Buick
OMC, Sonar, radio, dual battery hookup,
extra engine parts, dual axle Vanson trail-
er, spare tire and wheel.

Call Malcolm Leonard
Phoenix - 986-9532

BOAT & TRAILER, 19' Fiberform (in Phoenix)
V-6 Buick, OMC outdrive, trim tabs, radio,
depth finder & compass, 200 hrs. \$3900.00.

Lewis Beard 249-2997

BEAUTIFUL view on hill overlooking the Gulf
Large glass enclosed all-purpose room
with kitchen at one end and separate
bedroom at other end. Tiled shower bath.
Block and frame construction. Large
patio on Gulf side and plenty of room
for another on the opposite side. Extra
septic tank.

\$6900.00 Contact Sam Lema (Phx)
Evenings 242-4117 Office 271-2948

CONCORD 1972 - 24' Motorhome

Will trade for cabin with boat house.
Will negotiate. Frank Head (Phx)
278-2253 Eve.

MARINE MATE #10 radio with antenna, like new.
like new - \$275.00.

15" prop for Mercruiser - \$40.00
Roy Haenfler 945-1895 (Phx)

Eastside Tackle and Bait Shop

SALT AND FRESH WATER TACKLE
ALL KINDS OF LIVE BAIT - FLY MATERIALS
LICENSES AND TAGS - RESERVATION PERMITS
ROD AND REEL REPAIRS - RENTALS

5552 E. SPEEDWAY BLVD. TUCSON, ARIZONA 85712
JOE Y. LEE PHONE 745-0003

EXXON

HOFFMAN EXXON SERVICE

TIRES, BATTERIES & ACCESSORIES
MECHANIC ON DUTY
TOW SERVICE

35TH AVE. & PEORIA PHONE 942-7910

SALT
WATER
TACKLE

CHOLLA BAY
BAIT

BOAT
ACCESSORIES
&
ELECTRONICS

MEL JARVIS

**Marine Repairs &
Sporting Goods**

MEL AND DEBBIE JARVIS

Telephone 265-4398
Residence 274-6786

1501 East Indian School Road
Phoenix, Arizona 85014

Vasquez Liquor Store

Sonoyta, Sonora, Mexico

COMPARE PRICES BEFORE BUYING.
DOMESTIC AND IMPORTED LIQUORS.

Main Highway to Cholla Bay

Manuel Vasquez

FORMICA TOPS

Custom Counter Top Co.

TOM TINERVEN
PHONE 792-1920

3250 E. 47TH ST.
TUCSON, ARIZONA 85713

Kal's Rendezvous

Cocktails & Beer

3634 E. Thomas Rd.
Phoenix, Arizona
955-1371

PACKAGE
GOODS

Kal Mestrovich Owner
CLUB MEMBER

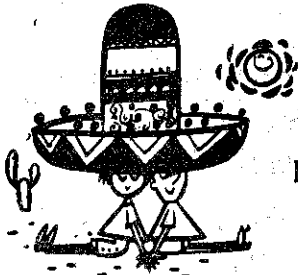


GROUP AUTO POLICY FOR C.B.S.C. MEMBERS

ENJOY THE SUN with
MEXICAN AUTO INSURANCE
designed for you . . .
SEE US TODAY

M. W. DOUGLAS AGENCY

940 W. INDIAN SCHOOL RD., No. 85
PHOENIX, ARIZONA 85013
265-9694 or 264-0300



New Available . . .

NAMED DRIVER MEXICAN AUTO INSURANCE
at

Gringo Pass, Inc.

LUKEVILLE, ARIZONA

Greatly reduced rates on yearly Mexican liability insurance
Prompt and Courteous Service

SUNRISE - SUNSET (unofficial)

		Rise	Set
June	7	5:18	7:36
"	14	5:18	7:39
"	21	5:19	7:41
"	28	5:20	7:42
July	5	5:23	7:41

You must inform the CHATTER any time
you wish your personal ad to be repeated!

CHOLLA CHATTER ADVERTISING RATES

10% DISCOUNT ON ADS PAID ONE YEAR IN ADVANCE
PRICES ARE FOR CAMERA-READY ADS

STANDARD SIZE BUSINESS CARDS	\$8.00
2 1/4" x 1 1/2"	\$8.00
2 1/4" x 2 1/2"	\$10.00
2 1/4" x 3 1/4"	\$12.00
5" x 1 1/2"	\$15.00
2 1/4" x 4 1/4"	\$25.00
HALF PAGE	\$45.00
FULL PAGE	\$75.00
INSIDE FRONT & BACK COVER	\$100.00
FULL CENTERFOLD	\$100.00
SMALLER ADS ON FRONT & BACK INSIDE COVERS, AND CENTERFOLD, TO BE NEGOTIATED.	
FIRST TIME PERSONAL ADS - FREE TO MEMBERS	

PLEASE SEND ADS & MAKE PAYMENTS TO:

FRANK ABRAM
2519 WEST WINDROSE
PHOENIX, ARIZONA 85029 PHONE: 997-2444

CHOLLA BAY SPORTSMEN'S CLUB, INC.
 1610 West LaMar Road, Phoenix, Az. 85015

Mr. & Mrs. Dean Fisher
 1417 N. Sahuara
 Tucson, Az. 85712

BULK RATE
 U.S. POSTAGE
PAID
 PERMIT NO. 138
 SCOTTSDALE, AZ.

JUNE 1980

