



Volume 8, Number 11

November, 1965

Phoenix Prexy Speaks Out On Mexican Incorporation!

Once again the important question of our becoming a nonprofit club, legally organized and/or incorporated under the laws of our host country — Mexico — has come before our board and council members, and now to YOUR attention — the individual club member.

As individuals, we are expected to obey the laws of the state or country that we travel or visit. Conversely, a group of individuals or a club is expected to follow the laws of the land that we are active in.

If we are to continue holding the annual fishing derby that we have enjoyed over the years past in Mexico, and to continue to maintain our radio shack for the safety and welfare of our members, or any other projects that we enjoy as a club in Mexico. THERE

IS NO DOUBT ABOUT IT, WE WILL HAVE TO INCORPORATE IN MEXICO!

We almost didn't have a derby this year, but thanks to our many friends in Mexico, last minute permission was obtained and we had a wonderful derby. Since we are not recognized as a legal organization in Mexico, naturally we can not be granted permission to hold club functions or operate radio equipment, etc.

There will be a nominal cost and some paper work involved, but the effort is worthwhile if we are to become LEGITIMATE in Mexico.

We trust that the council will take immediate action as we have delayed long enough.

Dick Gardner

DON'T MISS YOUR MEETINGS!

PHOENIX

TUCSON

Tues., NOV. 9-8:00 p.m.

**Goettl Auditorium
2005 E. Indian School Rd.**

**J.C. Building
1115 E. Ft. Lowell Rd.**

Cholla Chatter

Official publication of the
Cholla Bay Sportsmen's Club, Inc.

P. O. Box 7171, Phoenix 11, Arizona

COUNCIL

Chairman Wayne Earley
Secretary Chris Tatum
Treasurer Les Conlisk
Members: Frank Claver, Bill Hammer, Dick Gardner, Gene Henry, Bill Sanderson and Wilbur Canfield.

PHOENIX CHAPTER

President Dick Gardner
Vice President Lyle Rogers
Secretary Doris Earley
Treasurer Charles Reed
Directors: Harold Johnson, Mel Jarvis, Tom Sharp, Bill Rogers.

TUCSON CHAPTER

2570 E. Lester St.

President Frank McLaughlin
Vice President Harry Jones
Secretary Chris Tatum
Treasurer Dorothy Walker
Directors: Dr. B. Saylor, Les Conlisk, Howard Taylor, George Fisher.

PRESCOTT CHAPTER

P. O. Box 1187

President Gus Pabst, III
Vice President Dick Walraven
Secretary Audrey Pabst
Treasurer Bob Newlon
Directors: Jim Gagnor, Dr. J. Dixon, John Warren and Ken Rogers.

EDITOR & ADV. MGR. Lois Sanderson
2535 N. Dayton St., Phoenix
Phone 253-5386

PHOENIX CORRESPONDENT JoAnn Johnson
3002 W. MacKenzie Dr.
Phone 266-0150

ADVERTISING RATES For

Cholla Chatter
Costs Per Issue

Size	By Month	By Year
2 1/4" x 1 1/2"	\$ 8.00	\$ 6.00
2 1/4" x 2 1/2"	10.00	8.00
2 1/4" x 3 1/4"	12.00	10.00
5" x 1 1/2"	15.00	12.00
5" x 2 "	18.00	15.00
2 1/4" x 4 1/4"	18.00	15.00
1/2 Page	30.00	25.00
Full Page	50.00	45.00

Call Your Advertising Chairman!

PHOENIX

Dwayne Dollar — Office 264-4321
Home: 944-7404

TUCSON

Mark Morgan — Office 326-4321
Home: 325-8944

A WORD TO THE WISE!

Your editor has just learned that many of us who rent space for our casas to sit on and who have been in the habit of paying for this privilege for the year — are behind in our rent instead of being ahead! Our landlord says that he does not like to have to ask his valued customers for this money — but will be forced to do so if we continue in arrears. We do not have to pay for a full year in advance — or even for six months, but the rent must be paid up to date at all times. At home we expect to pay our rent or leases in advance — why not in MEXICO?

TO SAVE EMBARRASSMENT for all concerned, let's all get out receipts and compare them with Mr. Brown's records so that WE BOTH will know where we stand. Muy bien, gracias.

THOSE METRIC MEASURES

- 1 centimeter = .3937 inch
- 1 meter = 39.37 inches
- 1 kilometer = .62137 mile
- 1 liter = 1.0567 quarts (liquid)
- 1 inch = 2.54 centimeters
- 1 foot = .3048 meter
- 1 mile = 1.6093 kilometers
- 1 pound = .4536 kilogram
- 1 quart = .9463 liter (liquid)
- 1 gallon = 3.7852 liters

CHARLIE'S SHELL SERVICE

12th St. & Camelback Rd.

MOTOR TUNE SHELLUBRICATION

Pick Up & Delivery

266-3698 Club Member

TUCSON SCUTTLEBUTT



OCTOBER 12, 1965

The October meeting was called to order by President Frank McLaughlin at 8:00 p.m.

Guests Willis Hungerford and Mr. and Mrs. Arthur (Red and Esther) Cohn were introduced. New members Bill and Maggie Backer were signed up by Verna Conlisk.

Minutes of the September meeting were read and approved.

President McLaughlin asked for a report on the Council Meeting from Les Conlisk and Chris Tatum. The Councils' action to retrieve the lost generator, the changes in the Constitution and By Laws, the questionnaire and the effort of the Council to form an association in Mexico to better represent the CBSC were discussed at length.

Advertising Committee Chairman Mark Morgan suggested a three month term for each members work in selling space in the Chatter to give everyone a chance to work and also present a new face to the prospective advertiser.

Anniversary Dance Committee Chairman Daisy Tatum reported the date most members would be able to attend and bring friends would be Saturday night, November 20. A five piece band will provide the music from 8:30 p.m. till 12:30 a.m., and various refreshments will be offered.

The members of the Phoenix and Prescott Chapters are invited and urged to observe this 5th anniversary of the Tucson Chapter of the CBSC with us.

Motion made by Verna Conlisk that the Chapter make up any deficit from

the treasury, incurred by the dance committee, seconded and carried.

The door prize, a yacht cap, was donated by President Frank McLaughlin and won by Mark Morgan, which was, he said, just what he needed.

Meeting was adjourned for refreshments and a film.

Chris Tatum
Secretary

SEE YOUR ADVERTISERS

TID BIT

I never get lost — everyone tells me where to go!

* * *

No opportunity is ever lost, the other fellow takes those you miss.

* * *

To err is human, but when the eraser wears out before the pencil, you're overdoing it.

* * *

A narrow mind and a wide mouth usually go together.

* * *

No one can get fat on excuses, but everyone gets fed up on them.

* * *

I'm skeptical about boats after what happened to my mother in one — she had me!

* * *

He had been writing for a living for two years, and all he had sold was his watch, TV set and automobile.

HERRSCHER CONSTRUCTION CO.

Phone 274-8139

Custom Building—

Exclusively.

We Like Tough Jobs!

John E. Herrscher — Club Member
4215 N. 12th Street — Phx. 85014



By Gene Henry

I'm indebted to my compadre, Bill Valentine, for a lot of good fishing tips over the past few years. One in particular that has paid off handsomely both for salt-water and fresh-water fishing, was an introduction to Al Ellis and his line of handcrafted custom rods.

Arizona Sportsmen were very fortunate when Al decided to move his Rod Shop from his old stompin' grounds in Tennessee to Phoenix a couple of years ago. For those fishermen who like a rod handcrafted to their individual tastes this is the guy to see.

Al not only makes one of the finest lines of custom rods in this country, but also is one of the best all-round sports fishermen. He is an extremely proficient flycaster and has given flycasting demonstrations at boat shows throughout the country. He is also a top-rated bass fisherman, having represented Arizona in the World Series of Sports Fishing last year.

My first Ellis rod was a twin to a light action surf rod handcrafted for Bill Valentine. This rod has everything a surfcaster could desire, coupling light weight and fast action without sacrificing power. It handles lures from ½ ounce to 1½ ounce with ease and I have landed fish on it ranging from a ½ pound pompano to a 38 pound shark.

I have since added two Ellis flyrods and a bass casting rod to my collection, each built to the specifications asked for. These rods just leave darned little to be desired.

Many of you met Al when he gave a talk on rods at a Phoenix Club meeting last year and also had an opportunity to see his display of salt and fresh water custom rods.

If you are looking for some good advice on fishing tackle or techniques, drop by and see this gregarious ex-Tennessean (via Detroit). Just one tip though — if you want to save money, don't take your billfold because you are going to find it hard to leave without one of those sweet-performing Ellis rods in your hand.

SEE YOUR ADVERTISERS



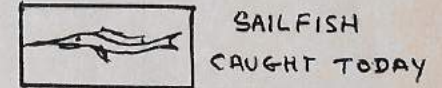
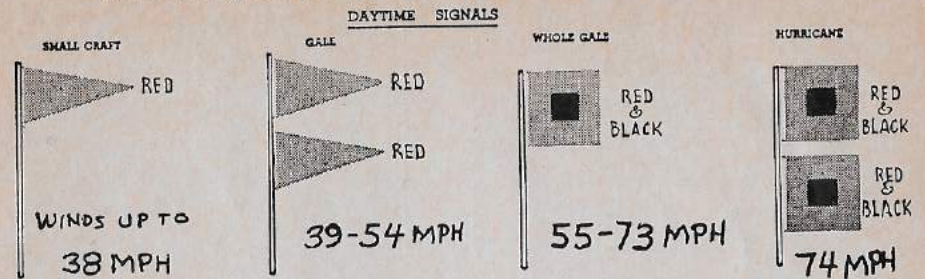
For the Best Air Conditioning
CALL

GOETTL BROS
HEATING & COOLING

2005 EAST INDIAN SCHOOL ROAD

"If it's made of metal call Goettl"

SMALL CRAFT, GALE, WHOLE GALE AND HURRICANE WARNINGS



Bill Boyers
Arizona SPORTLAND

- * EVINRUDE MOTORS
- * OUTBOARD MOTOR SERVICE
- * BOAT REPAIRING & REFINISHING
- * TRAILER REPAIRS
- * ROD & REEL REPAIRS
- * HANDCRAFTED FISHING RODS

Arizona's Most Complete Sport
Center

4701 N. 7th Ave. Phoenix, Ariz.
Phone 264-7193

SPECIAL: Ray Jeff 75-Watt
Radio Telephone \$299.95
Installed
**MARINE ELECTRONICS
of ARIZONA**

- Distributors for
- Fisher & Simpson Marine Radios
 - Ray Jeff Transistorized Marine Radio Telephone
 - Depth Recorders & Indicators
 - Marine Fiberglass Antennae
 - Radio Direction Finders
 - TRITON COMMERCIAL Electronic Equipment

SALES • SERVICE • INSTALLATION

Free Installation & 1 Years Maintenance
with every purchase of marine radios.

Matt Cubitto — club member
OFFICE 964-7114 HOME 964-7536
39 W. 6th AVE.

ABS METALLURGICAL PROCESSORS

4329 E. Magnolia, Phoenix, Ariz.

Always Better Service

Heat treating and cleaning per C-41

WO 7-6391

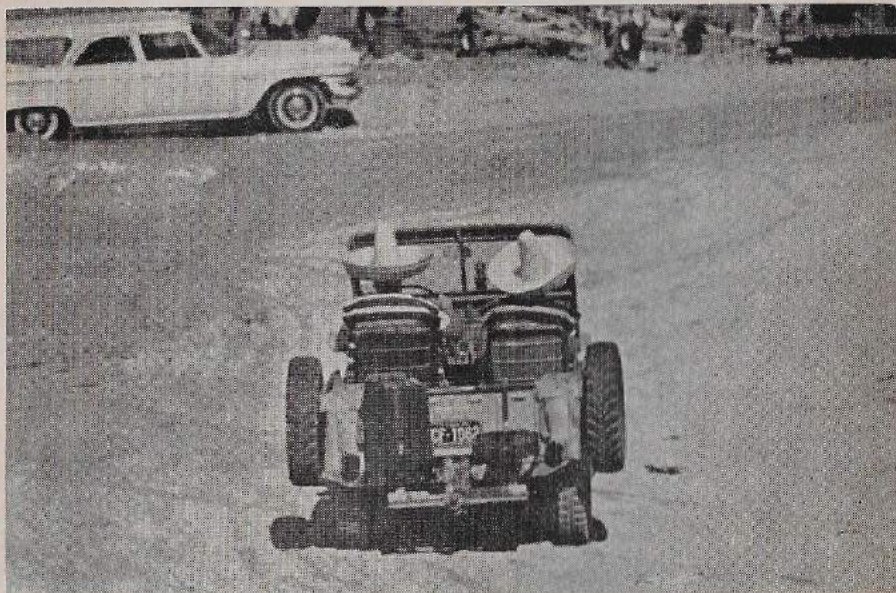
Myrt & Ken — Members

**Rocky Point Junction
CHEVRON**

Garage — Tire Service
Junction 86 - 85 South to Cholla Bay
For nite service — knock at trailer in rear
Mac & Mildred — Club Members

J. L. WILKERSON CO.

CRANE AND RIGGING
517 SOUTH 4th STREET, PHOENIX, ARIZ.
Truck Crane - Drag Line - Steel Erection
Clamshell - Concrete Hoisting - Demotion
Machinery Moving



Most of us know how to say nothing
—but few of us know WHEN.

If you are a man of few words — you
don't have so many to take back.

Use your VALLEY NATIONAL
BANK CREDIT CARD and just
say "CHARGE IT."
Cash is also WELCOME.



**TONY HALL
SPORTING GOODS**

1501 E. Indian School Rd.
Phoenix, Arizona — AM 5-4398
Club Member
Member Arizona Marine Dealers' Assn.

**PHOENIX
TENT and AWNING CO.**

Established 1910

Boat Canopies & Covers
Custom Canvas Specialties
Sunshades — Awnings

2533 N. 16th St. 274-5483

Jim Mabb



DUES

Dues for the Calendar year are as follows:

Single membership	\$10.00
Man & Wife	\$12.00
(Each voting memberships)	
Sponsored Child	\$2.00

If you have overlooked sending in your dues, now would be a good time to get the job done. ALSO, IF YOU HAVE A CHANGE OF ADDRESS, PLEASE NOTIFY US AS THE CHATTER WILL NOT BE FORWARDED.

Membership Committee

**APPLICATION AND BENEFICIARY DESIGNATION
CHOLLA BAY SPORTSMANS CLUB**

Name

Address

City State

Amount Paid \$ Years

I hereby designate the following named beneficiary under CONTINENTAL CASUALTY COMPANY Policy No. SR 168504 for the Loss of Life Indemnity, subject to the conditions named in said policy: Fifty per cent (50%) to the Cholla Bay Sportsmans Club Search and Rescue Fund.

Fifty per cent (50%) to:

..... if living, otherwise to my estate.

Signed at State of

..... This day of

19.....

Witness

Applicant

**Ship To Shore
Marine Radio**

Call Letters

2182	Safety & Calling
2555	Boat to Shore
2738	Intership
2638	Intership

Citizens Band Radios

Monitor Channel	22
Conversation	16
Conversation	11
Conversation	9
Conversation	5

**FISHERMEN
• STOP •
AT
COPPER LANES
IN AJO**

Our Coffee Shop and Lounge Are Open
From 7 A.M. until 2 A.M.

Lou Majors Club Member

**HOOK ONTO A
NEW MEMBER
Bring 'em to Meetings**

Tell 'em you saw it in the CHATTER



Fish are where you find them. How true this trite old chestnut is. Native, or non migratory, fish seem to prefer sticking pretty close to a particular spot or area and when a fisherman lucks on to one of these meat holes, he can generally load up in short order.

This is true in both fresh and salt water, the best, most consistant Bass gatherers, are the cagy old boys who have worked our lakes over often enough to locate these preferred places and remember this bonanza for subsequent trips.

Salt water meat fishermen, who time after time return to the boat landing with their dobbers dragging from hauling monsters off the bottom, you can bet, are the fishermen who have located an underwater offshore reef and have taken sightings so that they can return again and again to reap a harvest.

Migratory fish, on the other hand, are a different breed of Cat. They change their home quite often, preferring to follow the whims of mother nature and her water temperatures.

Green water migratory fish, such as Sea Trout, Pompano and Mackerel, who

once reach a spot where the water and food situation suit them, will generally stick pretty close to a given area until changing water temperature force them elsewhere.

The spin fisherman, who ferrets out these "home away from home spots," usually end up with a stringer full of floppers.

Most blue water migratory gamefish are strictly warm water dwellers. Speedsters, such as sailfish, dolphin, bonita and skipjack love to cavort in warm, tepid water, but when the temperature starts to drop as the days grow shorter, they skeddaddle elsewhere. From now on until the winter really sets in, the shore spinfisherman should be able to locate feeding sea trout and pompano along the sandy beaches, and by hard work and good luck, should be able to find an occasional herd of yellowfin feeding over the rocks just off shore.

I've gotten into many an argument with hard nosed bass fishermen, who look down their noses on all salt water fishermen, claiming that skill doesn't have much to do with the success of a saltwater fisher — that all you have to do to get a hookup, is to get a lure into the water. There are a lot of times when this is true. When fish are actively feeding, any lure even remotely resembling a live bait will get a hookup if you can get it within range of the hungry fish, but when fish are not in a feeding frenzy it's a different story entirely.

The skill, a saltwater fisherman must acquire, is basically the same skill a fresh water fisherman must possess, namely; knowing, when to fish, where to fish, and what type of lure will entice a "non-feeding" fish to strike. To

acquire this skill, time must be spent on the battlegrounds observing and experimenting.

One of the most frustrating experiences a fisherman can have, is to see fish and not be able to get them to pay the slightest attention to an offered lure. This has happened to me more times than I care to remember. The only thing to do, is to present the lure you think will work, in as many varied ways as possible. By that, I mean in a fast, slow, bouncing, or fluttering manner. If the fish still won't hit, switch lures and repeat. Sometimes the size of a lure makes all the difference, other times, the action on the retrieve is the answer. At other times, the only answer is a big stick of dynamite.

The most common mistake a novice spincaster makes when surfcasting, is to retrieve his lure the moment it hits the water. Unless you are casting over shallow rocks, this is a mistake. Even fish feeding on the surface will strike a sinking lure. Most lures have a built-in action, and by varying the speed on your retrieve, you give this action a chance to perform. There are exceptions to this, of course, because there are some lures that have no built-in action and strangely enough, at times, these lures (such as Johnson Lujon) will get the job done when all others fail.

After reading all of this mish-mash over, I realize that most readers will just become as confused as I am, writing it. Actually, the most successful fishermen I know, are the ones who work at it — in other words, it's a cinch you won't get a hookup unless your lure is in the water, and the guy who keeps his lure the wettest, is the guy who brings home the goodies.



How To Prepare Mexican Pottery for Cooking Purposes

Submitted by HELEN REED

For each gallon of water, add I cup of vinegar. Put liquid in a large enough container to completely immerse the pottery. Bring liquid to a boil and continue to boil the liquid with the pottery in it for approximately 20 minutes. Remove the pottery and wash in soap and water before using. When you follow these instructions you will find that the pottery will not develop some of the characteristic flavors and aromas of Mexican Pottery. This is for the glazed pottery.

The instructions were given to me by Nancy Parker Homemaker Service. P. O. Box 1152, Phoenix, Arizona 85001.

Vasquez Liquor Store

Sonoyta, Sonora, Mexico

Compare prices before buying.
Domestic and Imported Liquors.

Main Highway to Cholla Bay

Manuel Vasquez

Club Member

See the Lone Star SOUTHWIND

22' Deep Vee Foam Packed Double Hull
65 Sq. ft. Cockpit with 3 large below deck compartments

GEHON BOAT CO. 2101 E. Indian School Rd.

2-Watt Walkie Talkies \$114.95
MARINE & CITIZENS ELECTRONICS

M. W. DOUGLAS AGENCY

MEXICAN INSURANCE — FOR CLUB MEMBERS

LIABILITY: Auto, \$27.08; Jeep or Sand Buggy normally left in Mexico, \$7.97 additional. Boat Liability (usual size and power), \$16.44. PROPERTY: Cabin, Trailer, Personal Belongings, \$2,000 for \$24.93. Burglary on contents, \$1,000 for \$8.21 additional.

UNITED STATES COVERAGE, ALL FORMS WRITTEN

WES DOUGLAS CLUB MEMBER

940 W. Indian School Rd., #85 Phoenix, Arizona Telephone 265-9694



See the '66
Sea Bird
 The World's Softest Riding Boat
**SPORTSVILLE
 MARINE**
 4831 N. 7th St. — Phoenix
 264-4193
 Open Thursdays until eight

Mel Sez

You've got a slate like never before—
 And maybe nominations from the floor;
 So Cast your Ballot
 And Pick your Man;
 To let Him know
 Where YOU stand.

*Tell 'em you saw it
 in the CHATTER*

Supplies for —

BOAT — CABIN — HOME

Hours — Open Every Day
 Weekday — 8:00 to 7:00
 Saturday — 8:00 to 6:00
 Sunday — 9:00 to 5:00

**DO-IT-YOURSELF
 STORES, INC.**

Dodge at Grant, Tucson
 Cy Smidl, owner Phone 327-4557

TOTAL BANKING SERVICES



Chinske & McKay

MOBIL SERVICE

"Open 24 hours,
 7 days a week"

IN AJO!

MOTOR TUNEUPS
 MINOR REPAIRS

1440 Second Ave.



Get Well cards have been sent to Bill Rogers and Preston McGuire. Bill is now at home. Preston is in the V.A. Hospital, and we wish him a speedy recovery.

Another card was sent to Alvera Montgomery who entered the hospital for major surgery. You'll be up and feeling perky soon — we are sure!

A Card of Congratulations was sent to Patty and Ramon Perez, who are the proud Parents of a baby boy.

Jo Ann Johnson
 266-0150

**LEO'S AUTO
 & HOME SUPPLY
 SPORTING GOODS**

*Fresh and Salt Water Tackle
 Hunting and Camping Gear*

2823 N. Stone, Tucson 622-7637
 Club Member

OLLIVER / PILCHER
 AND ASSOCIATES

INSURANCE SINCE 1907

FIRE — CASUALTY — SURETY BONDS

3033 NORTH CENTRAL AVENUE

PHOENIX, ARIZONA 85012

277-5703

**WELCOME ABOARD!
 Phoenix Chapter**

Jack Gill
 Harold Niles
 Ann Niles

Tucson Chapter

Bill Backer
 Maggie Backer

Are You An Active Member?

Are you an active member—
 The kind that would be missed?
 Or are you just contented
 That you name is on the list?

Do you attend the meetings
 And mingle with the flock?
 Or do you stay at home
 To criticize and knock?

Do you take an active part
 To help the work along?
 Or are you satisfied
 To only just belong?

When the business sessions come
 around
 Do you pretend to be sick?
 And leave the work to just a few
 Then talk about the "clique"?

Think this over, member,
 You know right from wrong.
 Are you an active member,
 Or do you just belong?



By Mel Jarvis

In last month's Spark and Sputter I said that all accessories on your boat such as lights, horns, radio, etc., should be wired to an accessory fuse block.

Evinrude says that no accessories should be wired to the engine switch. One reason may be that they have so many wires on it now there isn't room for any more. But the real reason is that unless you know what you're doing, you can cause real damage to your engine magneto. And if you have an alternator on your engine you can really do a bang-up job not only to the alternator, but also to your pocketbook.

Now, if you're the type that has mucho lights and stuff, and would like to make sure they are off when the key is off; then on your engine switch there is a battery terminal, and you can feed a fuse block in that way. But you still should take your ground wire off your battery to the fuse block.

I think this month we'll go into the alternator and generator a little, and some of the do's and don'ts.

The alternator is the best thing that ever happened to outboard motors since Ole Evinrude. It's the answer to the fisherman who uses his engine to fish with at slow speeds, and does a lot of stopping and starting, and for the man who has many accessories on his boat. There is very little that can go wrong with it, if installed right and the human element considered. These are the points we will discuss.

The alternator itself is little more than a large rotor turning in a magnetic field. But to explain it would take all day, and give me a headache.

These are the do's and don'ts:

1. Never charge the battery with the battery cable connected to the battery.
2. Never take the cover off the junction box with the cables connected to the battery. **And never with the engine running.** If you do remove the cover, be very careful when you replace it, that you do not prevent free movement of the regulator, as it is rubber mounted to cushion it against boat vibration. This will cause an erratic charging rate.
3. No attempt should be made to adjust or repair the transistorized regulator unless you are experi-

enced in this field.

4. Make sure all your wiring connections are clean and tight. Your amp meter will reveal any malfunction of the system.
5. When you turn on your key you should have a 5 amp to 11 amp discharge and a charging rate of 15 amp to 20 amp, depending on battery load and rpm. An excess of 11 amp would indicate seepage or short-circuit. If you get a zero reading, check your 20 amp accessory fuse. If you still get a zero reading, check the 60 amp circuit fuse at the junction box. (With battery cables disconnected.) If this does not work go to your favorite outboard shop for help.

I may add here that it is a good idea to carry extra 20 amp and 60 amp fuses, especially in Mexico. (Reversed polarity will blow these fuses.)

I've been asked about the whine on Uni-chargers — don't worry about it. It is caused by the sudden loading of the magnetic force between the flywheel and lamination stack.

Oh, yes, for the boys who try to make 18 foot boats out of 16 foot boats and are forever moving equipment around, (like me) and you relocate the Uni-charger junction box, it must be mounted in an upright position and as vertical as possible. Transom angle will do, if it is not in excess of 15 degrees. It has to have ample circulation as it operates at relatively high

temperatures. So avoid close quarters.

If you do have trouble with your alternator and the checking of connections and fuses are found O.K., the outboard shop should be your next stop.

NEXT MONTH—D.C. GENERATORS

BEST BOAT SALES

You Pay Less When You Buy the Best

EVINRUDE SALES & SERVICE
Mariner & Duracraft Boats

2854 N. Stone — 792-2316
TUCSON J. P. KARAM

WARNING—

Skin Divers Below!



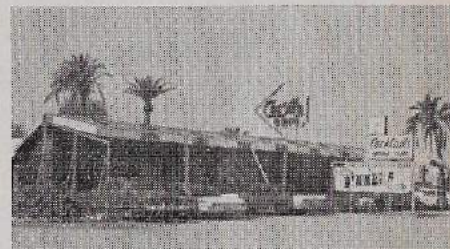
All people who use the radio facility at Cholla Bay should be members of the Cholla Bay Sportsman's Club. ★ ★ ★

See **KRAFT AUTO** for Front End Alignment
TIRE WEAR SPECIAL \$4.95



KRAFT AUTO
Club Members

2102 E. McDowell
Phone 258-6196



Cos Mo Cafe and Lounge

One of the Best places to eat
in Arizona

Located Halfway between Buckeye
and Gila Bend
on US 80

RICHFIELD SERVICE STATION & CAFE

"CLUB MEMBER"

Good Food and Fast Service

OPEN UNTIL 11 P.M.

At the Junction of 85 & 86
Where Phoenix Meets Tucson!

Redi-Mix Fuel for your Outboard

Make the AJO
Blakely Station No. 68



a "must stop" on your way down and
back from Cholla Bay.

Paul Colorich — Jack Cameron
Club Members



HANG ONTO THE OLD MEMBERS!
HOOK ONTO SOME NEW ONES
GET TOGETHER AT THE MEETINGS!

RENT-A-BOAT MARINE SALES & SERVICE

- Traveler
- Chris-Craft
- Glastron
- Wesco Sail Boats
- Johnson Motors
- Volvo-Eaton Interceptor
- O M C

4931 E. McDowell Rd — 279-8561
Phoenix



Marv's Automotive & Body Shops

4215 N. 7th Street — Ph. 266-2147
PHOENIX

Gossips are catalogued in three different types: Vest button type: Always popping off, Vacuum cleaner type: Always picking up the dirt, Liniment type: Always rubbing it in.

ATTENTION MEMBERS

Your mail can now be picked up
at Cholla Bay Radio Shack. Address
it as follows: (Example)

MRS. MARY DOE
c/o Club de Pescadores
Apartado No. 41
Puerto Penasco, Sonora
Mexico

Our Radio Operator will be our
mailman.

SERVEL BUTANE 8 cubic ft. REFRIGERATORS

\$59.50

Choice of right or left hand door

Excellent Condition
One Year Guarantee

Contact D. K. Purvis
P. O. Box 817, Eloy, Ariz.

(Night or Day)
Call 466-7311 or 466-7463

Club Members



CHECK THRU THE ADVERTISERS — PATRONIZE THEM



THEY MAKE THE MONTHLY CHATTER POSSIBLE

SPORT'S CENTER IN GLENDALE

Offers a complete line of fresh and salt water
equipment as well as Winchester & Colt
Hand Guns and Ammo.

Also — everything for the Archer!

EVINRUDE MOTORS • MIRROCRAFT
& HYDROSWIFT BOATS

Sales and Service

"If we sell it — we can repair it."

HAROLD SMITH — Owner
Club Member

5705 West Glendale Ave. — YE 7-7111



Coleman

Del Re's

Coleman & Zebco Service

Factory Authorized Representative
for Coleman & Zebco

547 E. Dunlap, Sunnyslope, Arizona
Mickey Del Re Ph. 943-1201

CHOLLA BAY SPORTSMEN'S CLUB, INC.

P. O. Box 7171, Phoenix 11, Arizona

PERMIT No. 248

BULK RATE

U. S. POSTAGE
Phoenix, Ariz.

GEORGE W. & MARY FISHER
1425 N. SAHUARA
TUCSON, ARIZONA

1965

RETURN REQUESTED

Operation: Tide Chart

By Lynn Bayless

Great Tides Occur at Full & New Moon

The times given are for high tide.
Low tide will follow each high by
about 5½ hours.

1ST QUARTER



November 1

FULL MOON



November 9

LAST QUARTER



November 16

NEW MOON



November 23

NOV. — 1965

1	1940
	0818
2	0933
	2112
3	1025
	2220
4	1105
	2311
5	1139
	2354
6	0000
	1208
7	1238
	0032
8	1308
	0109
9	1339
	0147
10	1413
	0225
11	1449
	0306
12	1529
	0350
13	1615
	0440
14	1711
	0540
15	1825
	0653

NOV. — 1965

16	1958
	0811
17	0923
	2128
18	1021
	2241
19	1110
	2340
20	1153
	0000
21	1232
	0029
22	1309
	0115
23	1345
	0156
24	1419
	0235
25	1454
	0315
26	1529
	0355
27	1605
	0436
28	1646
	0521
29	1735
	0613
30	0713
	1841

DEC. — 1965

1	0817
	2004
2	0914
	2122
3	1002
	2225
4	1044
	2319
5	1122
	0000
6	1159
	0005
7	1235
	0049
8	1314
	0131
9	1354
	0215
10	1436
	0259
11	1522
	0346
12	1612
	0435
13	1709
	0529
14	0629
	1817
15	0733
	1938